

mei | cashflow®

GENERAL SPARES CATALOGUE

References 2013

Version G2



GB

February 2013

Published by

MEI

Internet: <http://www.meigroup.com>

**NOTE:- Please Group Your Orders !
Shipment costs for orders of a value lower than £200 or €300 will be charged.**

The MEI General Spare Parts Catalogue, MEI UK International Ltd.®, and the MEI device are registered trademarks.

© MEI, 2013. All rights reserved

Except as permitted under the relevant local legislation, no part of this publication may be copied, transmitted, transcribed, or distributed in any form or by any means, or stored in a database or retrieval system, or translated in any language (natural or computer), without the prior written permission of MEI.

© MEI, 2013

MEI reserves the right to change the product and product specifications at any time. While every effort has been made to ensure that the information in this publication is accurate, MEI disclaims any liability for any direct or indirect losses (how so ever caused) arising out of use or reliance on this information.

For information regarding other languages versions of this catalogue please contact your Customer/Technical support representative.

This document does not necessarily imply product availability.

This edition (2013) printed in the United Kingdom.

© MEI, 2013

Table of contents

| | |
|--|-----------|
| Published by | 3 |
| CF8xxx Spares | 9 |
| CF8xxx Blank Grommet..... | 9 |
| 40way Ribbon Loom | 9 |
| MMI Module | 9 |
| CF85xx PCA + Cashless | 10 |
| CF82xx PCA - no Cashless | 10 |
| Top Module Assembly | 11 |
| Sensor Cover | 11 |
| CF8xxx Looms..... | 12 |
| Cashless Interface Loom | 12 |
| EXEC Machine Loom..... | 12 |
| MDB Machine Loom | 12 |
| MDB Peripheral Loom..... | 13 |
| CF8xxx Audit Looms..... | 14 |
| Audit DEX Jack loom | 14 |
| Audit DB9 Loom..... | 14 |
| Audit NECTA Loom..... | 15 |
| Printer Loom..... | 15 |
| DEX Audit Loom | 15 |
| CF7xxx Spares | 16 |
| 34way Ribbon Loom | 16 |
| MMI Module | 16 |
| MMI Module + IrdA..... | 16 |
| MMI Module No Display..... | 17 |
| CF7xxx PCA..... | 17 |
| Top Module Assembly | 17 |
| Sensor Cover | 18 |
| NOK-DKK Dispenser Module..... | 18 |
| CF7700 Spares | 19 |
| Cassette Parts | 19 |
| Chassis | 19 |
| MMI Module | 19 |
| MMI Assembly Components | 20 |
| MMI Module + IrdA..... | 20 |
| Sensor Cover | 20 |
| CF7700 PCA..... | 20 |
| Changer Common Spares CF8xxx & CF7xxx | 21 |
| Coin Storage Cassettes (Euro)..... | 21 |
| Coin Storage Cassettes (UK)..... | 23 |
| Coin Storage Cassettes (Other)..... | 24 |
| Coin Storage Tubes CF8xxx & CF7xxx..... | 27 |
| Bases | 28 |
| Coin Storage Cassette Lock | 29 |
| Solenoid Bank..... | 29 |
| Dispenser Module | 29 |
| Reject Lever..... | 30 |
| Acceptor Body Latch..... | 30 |
| Acceptor Lid Spring..... | 30 |
| Cable Entry Cover..... | 31 |
| Cassette Parts | 31 |
| Chassis | 31 |
| Dispenser | 32 |
| MMI Assembly Components | 32 |
| Acoustic Module..... | 32 |
| PCB Covers | 33 |
| Sensor Cover | 33 |
| Separator A Insert..... | 33 |
| Separator Gates..... | 34 |

| | |
|--|-----------|
| Snubbers..... | 34 |
| Screws | 35 |
| EC6000 Spares | 36 |
| Coin Storage Cassettes (Euro)..... | 36 |
| Coin Storage Cassettes (UK)..... | 36 |
| Coin Storage Cassettes (Other)..... | 37 |
| Cable Entry Cover..... | 38 |
| Cassette Parts | 38 |
| Chassis | 38 |
| Dispenser Module | 39 |
| MMI Module | 39 |
| MMI Assembly Components | 39 |
| PCB Covers | 40 |
| Top Module Assembly | 40 |
| Sensor Cover | 40 |
| EC6000 PCA..... | 41 |
| Machine Interface Looms (CF7xxx / EC6000) | 42 |
| EXEC Machine Loom..... | 42 |
| MDB Machine Loom | 42 |
| BDV Machine Loom | 42 |
| MDB Peripheral Loom..... | 43 |
| Audit Looms (CF7xxx / EC6000) | 44 |
| Printer Loom..... | 44 |
| DEX Audit Loom | 44 |
| CF7xxx IrDA Audit Loom | 44 |
| FIRDA MODULE 15W KIT..... | 45 |
| Audit Looms (VAM / CHG) | 46 |
| VAM - CHG DEX JACK | 46 |
| VAM - CF6xx Direct connect..... | 46 |
| VAM - CHG DB15 | 46 |
| VAM - CF7xxx Direct connect..... | 47 |
| Audit Looms (VAM / VMC) | 48 |
| VAM - VMC DB9 | 48 |
| VAM - VMC DEX JACK - Straight..... | 48 |
| VAM - Necta Direct Connect..... | 48 |
| VAM - VMC DEX JACK | 49 |
| Advanced 5000 | 50 |
| A5K Antenna | 50 |
| A5K MDB Loom | 50 |
| A5K Audit Loom DB15..... | 51 |
| A5K Audit Loom DEX..... | 51 |
| A5K DEX to DB9 Loom..... | 52 |
| mei-pay Series..... | 53 |
| USB Cable | 53 |
| mei-pay MDB Reader | 53 |
| mei-pay mdb MDB Y-Loom..... | 53 |
| mei-pay Master Reader | 54 |
| mei-pay master MDB Loom | 54 |
| mei-pay master MDB Periferal Loom..... | 54 |
| mei-pay master Exec Loom | 55 |
| mei-pay master EXEC Peripheral Loom..... | 55 |
| mei-pay master BDV Loom..... | 55 |
| mei-pay master BDV Peripheral Loom | 56 |
| mei-pay Display | 56 |
| e-key Bezel | 56 |
| e-key | 57 |
| Multi Bezel..... | 57 |
| e-tag..... | 57 |
| e-card | 58 |
| LED Cable..... | 58 |
| mei-pay Terminal | 59 |

| | |
|--------------------------------------|-----------|
| e-sticker Round..... | 59 |
| e-sticker Rectangular..... | 59 |
| Series 2000 | 60 |
| Stacker/Drive Assembly..... | 60 |
| Belts..... | 60 |
| Pulley..... | 61 |
| Springs..... | 61 |
| Tensioner Assembly..... | 61 |
| Wheels..... | 62 |
| Covers..... | 62 |
| Gears..... | 62 |
| Housing..... | 63 |
| Motors..... | 63 |
| Plates..... | 63 |
| Rings..... | 64 |
| Shaft..... | 64 |
| Stacker..... | 64 |
| Tach Disk..... | 65 |
| Washers..... | 65 |
| Gaskets..... | 65 |
| Looms..... | 66 |
| Sensor PCA..... | 66 |
| LED..... | 67 |
| LED Control Boards..... | 67 |
| Chassis..... | 67 |
| Dip Switch Labels..... | 68 |
| Control Boards..... | 68 |
| Screws..... | 68 |
| PCB Covers..... | 69 |
| Magazine Latch..... | 69 |
| Magazines..... | 69 |
| Magazine Prism..... | 70 |
| Magazine Labels..... | 70 |
| Magazine Locking Hasp..... | 70 |
| Bezel Mounting Plate (Imperial)..... | 71 |
| Bezel Kits..... | 71 |
| Bezel Labels..... | 71 |
| VN Calibration Paper..... | 72 |
| Rollers..... | 72 |
| Series 2000 12v | 73 |
| Housing..... | 73 |
| Looms..... | 73 |
| Sensor PCA..... | 74 |
| Control Boards..... | 74 |
| Bezel Kits..... | 74 |
| CF95xx | 75 |
| 4-Way Separator Module..... | 75 |
| 8-Way Separator Module..... | 75 |
| Coin Cups..... | 75 |
| Coin Cup Adaptor..... | 75 |
| Reject Levers..... | 76 |
| Reject Lever Spring..... | 76 |
| Indirect Entry Deck..... | 76 |
| Indirect Entry Lid..... | 76 |
| CF95xx Reject Covers..... | 77 |
| Validator Screws..... | 77 |
| Machine Interface Loom (Others)..... | 77 |
| Y-Chute..... | 78 |
| Channel Pins..... | 78 |
| CF3xx | 79 |
| Acceptor Discriminators (EURO)..... | 79 |
| Acceptor Discriminators (UK)..... | 79 |

| | |
|---|-----------|
| Acceptor Discriminators (OTHER)..... | 80 |
| Accept Gate Module | 80 |
| Exit Plate | 80 |
| Discriminator Software..... | 81 |
| Acceptor Interface PCB STD 112 | 81 |
| Acceptor Interface PCB STD 124 | 81 |
| Acceptor Interface PCB STD 2/3 | 81 |
| Acceptor Interface PCB DUAL POLARITY | 82 |
| Front Entry Back Covers..... | 82 |
| Top Entry Back Covers | 82 |
| PCB Back Covers | 82 |
| Coin Cups | 83 |
| Front Plate & Bezel Spares..... | 84 |
| DCE Bezel (Coin & Token) | 84 |
| DCE Bezel (Coin)..... | 84 |
| DCE Bezel (EURO)..... | 84 |
| DCE Bezel (Universal) | 84 |
| DCE Bezel Plate | 84 |
| Single Coin Entry Bezel | 85 |
| Single Coin Entry Coin Chute | 85 |
| Front Entry Bezel | 85 |
| Front plates | 86 |
| Front Plate Mounting Plate | 86 |
| Bezel Clips | 86 |
| Bezel Button..... | 87 |
| Bezel Button Accessory | 87 |
| Front Plates - Mini..... | 87 |
| Front Plates - Midi..... | 87 |
| Front Plate Labels - Mini/Midi | 88 |
| Front Plate Labels - Maxi..... | 88 |
| Cashflow STS | 89 |
| HII Adaptor & Loom | 89 |
| STS Pack - CPM..... | 89 |
| STS Pack - Configuration | 89 |
| CF7000 STI Loom..... | 89 |
| WSM Spares | 90 |
| WSM System | 90 |
| Credit Store..... | 90 |
| HII Adaptor & Loom | 90 |
| USB Cable | 90 |
| WSM Spare CD | 91 |
| Service Tools..... | 92 |
| CPM | 92 |
| USB Cable | 92 |
| MDB Host Simulator Box | 92 |
| Test Box & Loom Kit (EMTB)..... | 93 |
| Test Box & Loom Kit (MITB) | 93 |
| CF6xx (Subject To Availability)..... | 94 |
| Coin Storage Cassettes (Euro)..... | 94 |
| Coin Storage Cassettes (UK)..... | 95 |
| Coin Storage Cassette Parts | 95 |
| Top Prism Housing | 95 |
| Blue Cassette Clips..... | 96 |
| Coin Storage Tubes | 96 |
| Coin Storage Labels | 97 |
| Designators | 97 |
| Change giver Discriminators CF69x (EURO) | 98 |
| Change giver Discriminators CF69x (UK)..... | 98 |
| Change giver Discriminators CF69x (OTHER) | 99 |
| Accept Gate Module | 99 |
| Accept Gate Module Label..... | 99 |
| Exit Plate | 99 |

| | |
|--|------------|
| Discriminator Back Cover | 100 |
| Discriminator Coin Entry Cup..... | 100 |
| Discriminator Reject Lever..... | 100 |
| Discriminator Reject Lever Spring | 100 |
| Discriminator Hinge Spring | 100 |
| Separator Module | 101 |
| Separator Casing..... | 101 |
| Solenoid Bank..... | 101 |
| Separator Module Label..... | 101 |
| Top Level Sensor PCB | 102 |
| Dispenser Module | 102 |
| Dispenser Gear Case & Cover | 102 |
| Dispenser Base Plate | 102 |
| Dispenser Arms | 103 |
| Dispenser Crank Arm Inserts..... | 103 |
| Dispenser Module PCB..... | 103 |
| Crank Arm..... | 103 |
| Dispenser Motor..... | 104 |
| Dispenser Module (Other Parts) | 104 |
| CF69x Control Boards | 104 |
| Transformers..... | 105 |
| Change giver Keypad Spares | 105 |
| Change giver Spine | 105 |
| Control Board Back Cover | 106 |
| Cash Box Route Cover | 106 |
| Acceptor Retaining Clip | 106 |
| Blank Grommet (Small)..... | 106 |
| Blank Grommet (Large) | 106 |
| Mounting Plate | 107 |
| Acceptor/Control Board Loom..... | 107 |
| Credit Display..... | 107 |
| External Display Looms | 107 |
| Machine Interface Looms CF6xx (Subject to Availability) | 108 |
| Machine Interface Loom T1 (Executive)..... | 108 |
| Machine Interface Loom T2 (BDV) | 108 |
| Machine Interface Loom T3 (1 Price) | 108 |
| Machine Interface Loom T4 (4 Price) | 109 |
| Machine Interface Loom T5 (4 Price) | 109 |
| Machine Interface Loom T6 (3 Price) | 109 |
| Machine Interface Loom T10 (Executive+)..... | 110 |
| Machine Interface Loom T11 (4 Price) | 110 |
| Machine Interface Loom T13 (4 Price) | 110 |
| Machine Interface Loom T14 (4 Price) | 111 |
| CF5xx & CF69x MDB Machine Loom..... | 111 |
| CF690 MDB Peripheral Loom..... | 111 |
| CF691-CF695 Machine Interface Loom (MDB EXT/PSU) | 111 |
| CF69x Machine Interface Loom (Protol 'A') | 112 |
| CF6xx Audit Looms (Subject To Availability) | 113 |
| Audit Connectokit Loom..... | 113 |
| Audit Optokit Loom | 113 |
| Audit Printokit Loom..... | 113 |
| CF69x IrDA Audit Loom..... | 114 |
| FIRDA MODULE 15W KIT..... | 114 |

CF8xxx Spares

CF8xxx Blank Grommet



| Part Number | Pack Qty | Description |
|-------------|----------|----------------------|
| 798284001P | 10 | CF8xxx Blank Grommet |

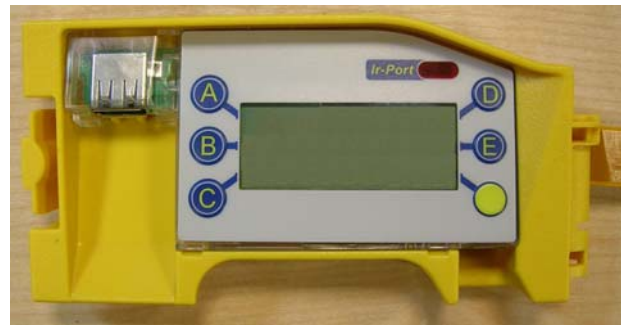
40way Ribbon Loom



| Part Number | Pack Qty | Description |
|-------------|----------|-------------------|
| 729038002P | 10 | 40way Ribbon Loom |

This part is now on limited supply and has been replaced by part number 795824002P.

MMI Module



| Part Number | Pack Qty | Description |
|-------------|----------|-------------------------------|
| 798342007P | 1 | CF8xxx MMI - No Bluetooth |
| 798344001P | 1 | CF8xxx MMI Module + Bluetooth |

CF8xxx Spares

CF85xx PCA + Cashless



| Part Number | Pack Qty | Description | |
|-------------|----------|-----------------------|--|
| 111551615P | 1 | CF85xx PCA + Cashless | |

This CF85xx Spare PCB is capable of having a "mei-pay Cashless PCA" fitted (not supplied).

CF82xx PCA - no Cashless



| Part Number | Pack Qty | Description | |
|-------------|----------|--------------------------|--|
| 111550624P | 1 | CF82xx PCA - no Cashless | |

This CF82xx Spare PCB is not capable of having a "mei-pay Cashless PCA" fitted.

Top Module Assembly



| Part Number | Pack Qty | Description | |
|-------------|----------|-------------------|--|
| 798580001P | 1 | CF8xxx Top Module | |

Sensor Cover



| Part Number | Pack Qty | Description | |
|-------------|----------|--------------|--|
| 798417001P | 50 | CF8xxx Label | |

CF8xxx Looms

Cashless Interface Loom



| Part Number | Pack Qty | Description | |
|-------------|----------|--------------------------------|--|
| 798295002C | 1 | 8xxx - Cashless Interface Loom | |

EXEC Machine Loom



| Part Number | Pack Qty | Description | |
|-------------|----------|-------------------|--|
| 791994001C | 1 | Exec Machine Loom | |

This loom incorporates both the Power connector and the Communications connector.

MDB Machine Loom



| Part Number | Pack Qty | Description | |
|-------------|----------|------------------|--|
| 798293008C | 1 | MDB Machine Loom | |

MDB Peripheral Loom



| Part Number | Pack Qty | Description | |
|-------------|----------|---------------------|--|
| 798293003C | 1 | MDB Peripheral Loom | |

CF8xxx Audit Looms

Audit DEX Jack loom



| Part Number | Pack Qty | Description | |
|-------------|----------|-----------------------------|--|
| 798291004C | 1 | CABLE 8xxx TO VMC, DEX JACK | |

Audit DB9 Loom



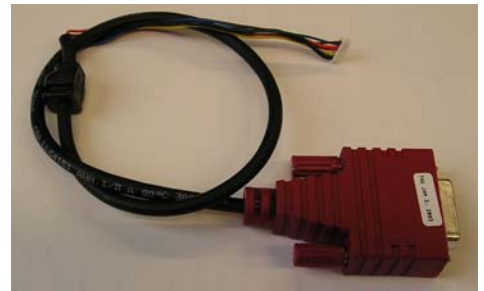
| Part Number | Pack Qty | Description | |
|-------------|----------|------------------------|--|
| 798297006C | 1 | CABLE 8xxx to VMC, DB9 | |

Audit NECTA Loom



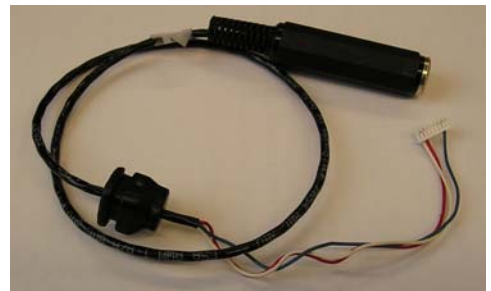
| Part Number | Pack Qty | Description |
|-------------|----------|--------------------------|
| 798296010C | 1 | CABLE 8xxx to VMC, NECTA |

Printer Loom



| Part Number | Pack Qty | Description |
|-------------|----------|--------------|
| 798291009C | 1 | Printer Loom |

DEX Audit Loom



| Part Number | Pack Qty | Description |
|-------------|----------|----------------|
| 798295007C | 1 | DEX Audit Loom |

CF7xxx Spares

34way Ribbon Loom



| Part Number | Pack Qty | Description | |
|-------------|----------|-------------------|--|
| 729030001P | 10 | 34way Ribbon Loom | |

MMI Module



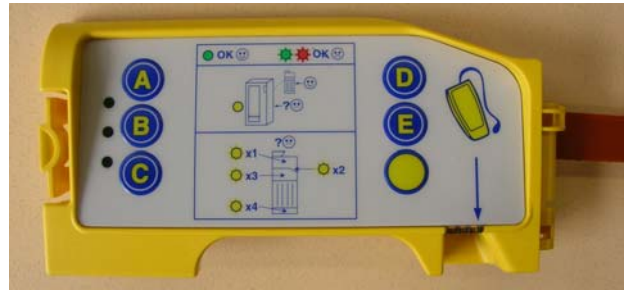
| Part Number | Pack Qty | Description | |
|-------------|----------|-------------|--|
| 727785002P | 1 | MMI Module | |

MMI Module + IrdA



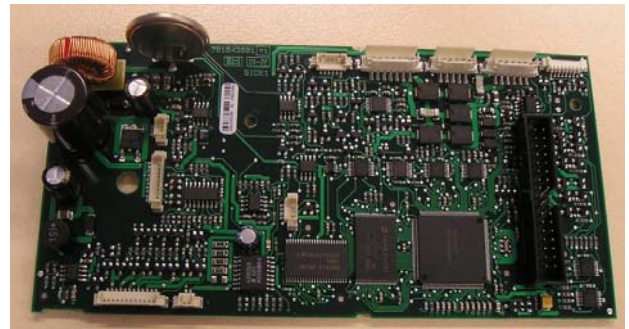
| Part Number | Pack Qty | Description | |
|-------------|----------|-------------------|--|
| 727787001P | 1 | MMI Module + IrdA | |

MMI Module No Display



| Part Number | Pack Qty | Description |
|-------------|----------|-----------------------|
| 727788003P | 1 | MMI Module No Display |

CF7xxx PCA



| Part Number | Pack Qty | Description |
|-------------|----------|-------------|
| 792013001P | 1 | CF7xxx PCA |

Changing this PCA requires the use of a STS application.

Top Module Assembly



| Part Number | Pack Qty | Description |
|-------------|----------|-------------|
| 794426001P | 1 | Top Module |

Sensor Cover



| Part Number | Pack Qty | Description | |
|-------------|----------|--------------|--|
| 730848001P | 50 | CF7000 Label | |

NOK-DKK Dispenser Module

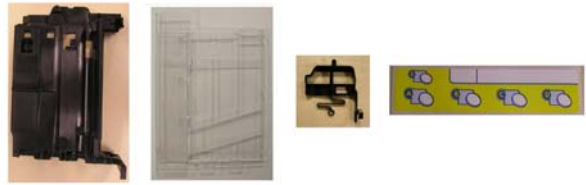


| Part Number | Pack Qty | Description | |
|-------------|----------|----------------------------|--|
| 797754001P | 1 | NOK/DKK DISPENSER ASSEMBLY | |

This dispenser has been specially designed for the Norway and Denmark markets to handle their coins that have a hole in the centre

CF7700 Spares

Cassette Parts



| Part Number | Pack Qty | Description | |
|-------------|----------|------------------------|--|
| 728211004P | 5 | Cassette Chassis | |
| 728213003P | 5 | Cassette Cover | |
| 730851001P | 50 | Cassette Label | |
| 728211009P | 25 | Cassette Release Latch | |

Chassis



| Part Number | Pack Qty | Description | |
|-------------|----------|---------------|--|
| 795896001P | 1 | Black Chassis | |

MMI Module



| Part Number | Pack Qty | Description | |
|-------------|----------|-------------------|--|
| 727783008P | 1 | CF7700 MMI Module | |

MMI Assembly Components



| Part Number | Pack Qty | Description |
|-------------|----------|-----------------|
| 728422002P | 100 | MMI Door Spring |
| 795930001P | 20 | MMI Hinge |
| 728157001P | 10 | MMI Reject Door |

MMI Module + IrdA



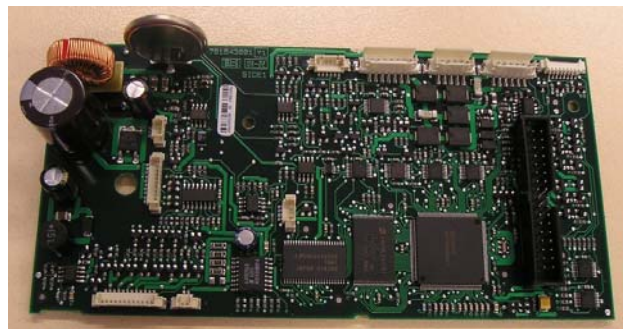
| Part Number | Pack Qty | Description |
|-------------|----------|------------------------|
| 727785007P | 1 | CF7700 MMI Module + IR |

Sensor Cover



| Part Number | Pack Qty | Description |
|-------------|----------|--------------|
| 730848001P | 50 | CF7000 Label |

CF7700 PCA



| Part Number | Pack Qty | Description |
|-------------|----------|-------------|
| 798061016P | 1 | CF7700 PCA |

Changer Common Spares CF8xxx & CF7xxx

Coin Storage Cassettes (Euro)



| Part Number | Pack Qty | Description | |
|-------------|----------|--|--|
| 793823001 | 1 | € AA Cassette (5c, 10c, 50c, 20c, 5c) | |
| 793829003 | 1 | € AC Cassette (5c, 10c, 50c, 20c, €1) | |
| 793827004 | 1 | € AD Cassette (5c, 10c, 50c, 10c, €1) | |
| 793825005 | 1 | € AE Cassette (5c, 10c, 50c, 10c, 5c) | |
| 793823006 | 1 | € BA Cassette (10c, 10c, 50c, 10c, €1) | |
| 793821007 | 1 | € BB Cassette (10c, 10c, 50c, 20c, €1) | |
| 793829008 | 1 | € BC Cassette (20c, 10c, 50c, €1, €2) | |
| 793827009 | 1 | € BD Cassette (€1, -, 50c, €1, €2) | |
| 793822010 | 1 | € BE Cassette (€1, -, 50c, €2, €2) | |
| 794646001 | 1 | € CB Cassette (20c, 10c, 50c, €1, 20c) | |
| 793826013 | 1 | € CE Cassette (€1, 5c, 50c, 20c, €2) | |
| 793824019 | 1 | € DAA Cassette (20c, 10c, 50c, 50c, 1E) | |
| 793829020 | 1 | € DAB Cassette (20c, 10c, 20c, 50c, 50c) | |
| 793827021 | 1 | € DAC Cassette (€1, 10c, €2, €1, 50c) | |
| 793825022 | 1 | € DAD Cassette (5c, 10c, 20c, 20c, 50c) | |
| 793821024 | 1 | € DAE Cassette (5c, 5c, 10c, 50c, €1) | |
| 793829025 | 1 | € DCC Cassette (20c, 10c, 50c, €1, €1) | |
| 793827026 | 1 | € DCD Cassette (10c, 10c, 20c, 20c, 50c) | |
| 793825027 | 1 | € DCE Cassette (50c, 2c, 1c, 10c, 5c) | |
| 793823028 | 1 | € DDA Cassette (5c, 10c, €1, 20c, €2) | |
| 793824014 | 1 | € EA Cassette (50c, 10c, 1c, €1, 5c) | |
| 793820016 | 1 | € EC Cassette (5c, 10c, 50c, 20c, 10c) | |

Coin Storage Cassettes (Euro)



| Part Number | Pack Qty | Description | |
|-------------|----------|---------------------------------------|--|
| 793828017 | 1 | € ED Cassette (5c, 10c, 20c, 20c, 1E) | |

Coin Storage Cassettes (UK)



| Part Number | Pack Qty | Description | |
|-------------|----------|---|--|
| 794822002 | 1 | £ AA Cassette (10p, 20p, 50p, 20p, 10p) | |
| 794824001 | 1 | £ AB Cassette (5p, 5p, 50p, 20p, 10p) | |
| 794820003 | 1 | £ AC Cassette (5p, 20p, 50p, 20p, 10p) | |
| 794828004 | 1 | £ AD Cassette (£1, 20p, 50p, 20p, 10p) | |
| 794826005 | 1 | £ AE Cassette (10p, 5p, 50p, 20p, 10p) | |
| 794824006 | 1 | £ BA Cassette (5p, 20p, 10p, 20p, 10p) | |
| 794822007 | 1 | £ BB Cassette (£1, 5p, 50p, 20p, 10p) | |
| 794820008 | 1 | £ BC Cassette (1p, 5p, 2p, 20p, 10p) | |
| 794828009 | 1 | £ BD Cassette (1p, 5p, 2p, 20p, 20p) | |
| 794823010 | 1 | £ BE Cassette (1p, 5p, 50p, 20p, 2p) | |
| 794821011 | 1 | £ CA Cassette (1p, 1p, 5p, 20p, 2p) | |
| 794829012 | 1 | £ CB Cassette (1p, 5p, 2p, 20p, 2p) | |
| 794827013 | 1 | £ CE Cassette (2p, 1p, 50p, £1, 10p) | |
| 794825014 | 1 | £ EA Cassette (1p, 5p, 10p, £1, 20p) | |
| 794823015 | 1 | £ EB Cassette (1p, 5p, 50p, £1, 10p) | |
| 794821016 | 1 | £ EC Cassette (£1,20p,50p,£1,10p) | |

Coin Storage Cassettes (Other)



| Part Number | Pack Qty | Description | |
|-------------|----------|---|--|
| 797487001 | 1 | Bulgaria AA Cassette (5s, 10s, 20s, 50s, 20s) | |
| 797485002 | 1 | Bulgaria AD Cassette (1L, 5S, 1L, 1L, 1L) | |
| 796871001 | 1 | Croatia AA Cassette (50l, 50l, 1K, 2K, 5K) | |
| 797856001 | 1 | Croatia AE Cassette (1K, 50L, 2K, 2K, 5K) | |
| 796868001 | 1 | Czech Republic AA Cassette (1K, 2K, 2K, 5K, 10K) | |
| 797416001 | 1 | Czech Republic AB Cassette (1K, 2K, 5K, 10K, 20K) | |
| 798768001 | 1 | Czech Republic AC Cassette (1K, 1K, 2K, 5K, 10K) | |
| 798680002 | 1 | Denmark AA Cassette (2Kr, 1Kr, 5Kr, 10Kr, 1Kr) | |
| 798682001 | 1 | Denmark AB Cassette (2Kr, 2Kr, 5Kr, 10Kr, 1Kr) | |
| 798688003 | 1 | Denmark AC Cassette (2Kr, 50o, 5Kr, 10Kr, 1Kr) | |
| 798813002 | 1 | Hungary AA Cassette (10F, 5F, 50F, 100F, 20F) | |
| 798815001 | 1 | Hungary AC Cassette (10F, 5F, 50F, 20F, 20F) | |
| 796879002 | 1 | India AA Cassette (50p, 5R, 1R, 5R, 50p) | |
| 794879006 | 1 | Israel AA Cassette (10ag, 1Sh, 50ag, 1Sh, 5Sh) | |
| 794877007 | 1 | Israel AB Cassette (10ag, 1Sh, 50ag, 50ag, 5Sh) | |
| 794875008 | 1 | Israel AC Cassette (10ag, 1Sh, 50ag, 5Sh, 5Sh) | |
| 794873009 | 1 | Israel AD Cassette (1Sh, 1Sh, 50ag, 50ag, 5Sh) | |
| 794878010 | 1 | Israel AE Cassette (1Sh, 1Sh, 50ag, 10Sh, 5Sh) | |
| 794876011 | 1 | Israel BA Cassette (5Sh, 1Sh, 50ag, 50ag, 10Sh) | |
| 798831001 | 1 | Israel BB Cassette (10Sh, 1Sh, 50ag, 2Sh, 5Sh) | |
| 794870014 | 1 | Israel BD Cassette (1Sh, 1Sh, 2Sh, 5Sh, 10Sh) | |
| 794878015 | 1 | Israel BE Cassette (1Sh, 1Sh, 2Sh, 2Sh, 5Sh) | |
| 797681001 | 1 | Lithuania AA Cassette (10c, 20c, 1Lt, 50c, 2Lt) | |

Coin Storage Cassettes (Other)



| Part Number | Pack Qty | Description | |
|-------------|----------|--|--|
| 797796001 | 1 | Norway AA Cassette (1Kr, 1Kr, 5Kr, 10Kr, 1Kr) | |
| 798679001 | 1 | Norway AC Cassette (5Kr, 1Kr, 5Kr, 10Kr, 1Kr) | |
| 798457007 | 1 | Norway BA Cassette (1Kr, 1Kr, 5Kr, 10Kr, 10Kr) | |
| 798455008 | 1 | Norway BB Cassette (5Kr, 1Kr, 5Kr, 10Kr, 10Kr) | |
| 795778001 | 1 | Poland AA Cassette (50g, 10g, 20g, 1Z, 2Z) | |
| 795401001 | 1 | Poland AB Cassette (50g, 10g, 20g, 1Z, 50g) | |
| 795774003 | 1 | Poland AC Cassette (50g, 10g, 10g, 50g, 1Z) | |
| 795776002 | 1 | Poland AD Cassette (50g, 10g, 20g, 1Z, 1Z) | |
| 795772004 | 1 | Poland AE Cassette (50g, 50g, 5Z, 1Z, 2Z) | |
| 795770005 | 1 | Poland BA Cassette (50g, 20g, 10g, 1Zl, 50g) | |
| 796751002 | 1 | Romania AA Cassette (10B, 10B, 10B, 50B, 50B) | |
| 796753001 | 1 | Romania AC Cassette (50B, 10B, 50B, 50B, 50B) | |
| 796279001 | 1 | Russia AA Cassette (5Rb, 1Rb, 10Rb, 2Rb, 5Rb) | |
| 796279006 | 1 | Russia AB Cassette (5Rb, 1Rb, 5Rb, 2Rb, 5Rb) | |
| 798459001 | 1 | Russia CA Cassette (50k, 1R, 10Rn, 2R, 5R) | |
| 798455003 | 1 | Russia CB Cassette (1R, 1R, 2R, 2R, 5R) | |
| 798457002 | 1 | Russia CE Cassette (5R, 1R, 2R, 2R, 5R) | |
| 798454012 | 1 | Russia EA Cassette (5R, 10Rn, 10Rn, 10Rn, 5R) | |
| 798452013 | 1 | Russia EB Cassette (5R, 10Rn, 10Rn, 10Rn, 10Rn) | |
| 798450014 | 1 | Russia EC Cassette (5R, 1R, 10Rn, 10Rn, 10Rn) | |
| 798458015 | 1 | Russia ED Cassette (5R, 1R, 10Rn, 2R, 5R) | |
| 796902001 | 1 | Slovakia AA Cassette (1K, 1K, 2K, 5K, 2K) | |
| 796693001 | 1 | South Africa AA Cassette (20c, 10c, 1R, 50c, 2R) | |

Coin Storage Cassettes (Other)



| Part Number | Pack Qty | Description | |
|-------------|----------|--|--|
| 796691002 | 1 | South Africa AB Cassette (50c, 1R, 50c, 5R, 2R) | |
| 796699003 | 1 | South Africa AC Cassette (50c, 1R, 5Rn, 50c, 2R) | |
| 797301001 | 1 | South Africa AD Cassette (50c, 1R, 5Rn, 5R, 2R) | |
| 796695005 | 1 | South Africa AE Cassette (50c, 1R, 2R, 5R, 2R) | |
| 797309002 | 1 | South Africa BA Cassette (50c, 1R, 5Rn, 2R, 2R) | |
| 796691007 | 1 | South Africa BB Cassette (5Rn, 1R, 5Rn, 50c, 2R) | |
| 796699008 | 1 | South Africa BC Cassette (2R, 1R, 5Rn, 5R, 2R) | |
| 796697009 | 1 | South Africa BD Cassette (5Rn, 1R, 5Rn, 2R, 2R) | |
| 795763002 | 1 | Sweden AA Cassette (1Kr, - , 5Kr, - , 1Kr) | |
| 795761003 | 1 | Sweden AB Cassette (1K, 10K, 5K, 10K, 1K) | |
| 795769004 | 1 | Sweden AC Cassette (1Kr, 10Kr, 5K, 1Kr, 1Kr) | |
| 797327001 | 1 | Turkey BC Cassette (50K, 25K, 1L, 1L, 1L) | |
| 798453009 | 1 | Turkey BE Cassette (5K, 10K, 1K, 50K, 1L) | |
| 797649001 | 1 | UAE AA Cassette (25F, 50F, 50F, 1D, 1D) | |
| 798700001 | 1 | UAE AB Cassette (25F, 25F, 50F, 50F, 50F) | |
| 797647002 | 1 | UAE AE Cassette (1D, 50F, 1D, 1D, 1D) | |
| 796928001 | 1 | Ukraine AA Cassette (5K, 25K, 10K, 50K, 1G) | |
| 797283001 | 1 | Ukraine BA Cassette (5K, 25K, 50K, 50K, 1G) | |

Coin Storage Tubes CF8xxx & CF7xxx



| Part Number | Pack Qty | Description | |
|-------------|----------|--|--|
| 795023004P | 10 | Tube 19 + GREY Base - (PK10) | |
| 793098001P | 10 | Tube 19 + WHITE Base - (PK10) | |
| 795029006P | 10 | Tube 20 + LIGHT BLUE Base - (PK10) | |
| 794027010P | 10 | Tube 20 + ORANGE Base - (PK10) | |
| 795023009P | 10 | Tube 22 + AZTEC GOLD Base - (PK10) | |
| 795028010P | 10 | Tube 22 + HONEY BEIGE Base - (PK10) | |
| 794020005P | 10 | Tube 22 + RED Base - (PK10) | |
| 796591001P | 10 | Tube 22(+1c Insert) + AZTEC GOLD Base - (PK10) | |
| 794028001P | 10 | Tube 22(+1c Insert) + RED Base - (PK10) | |
| 797136001P | 10 | Tube 22(+2c Insert) + AZTEC GOLD Base - (PK10) | |
| 794026002P | 10 | Tube 22(+2c Insert) + RED Base - (PK10) | |
| 795027002P | 10 | Tube 24 + LIGHT GREEN Base - (PK10) | |
| 795025008P | 10 | Tube 24 + PINK Base - (PK10) | |
| 794024020P | 10 | Tube 24 + YELLOW Base - (PK10) | |
| 795021005P | 10 | Tube 25 + BLACK Base - (PK10) | |
| 794026100P | 10 | Tube 25 + PURPLE Base - (PK10) | |
| 794022200P | 10 | Tube 27 + BLUE Base - (PK10) | |
| 795025003P | 10 | Tube 27 + BROWN Base - (PK10) | |
| 796606001P | 10 | Tube 27 + GREY Base - (PK10) | |
| 796280002P | 10 | Tube 27 + WHITE Base - (PK10) | |
| 795027007P | 10 | Tube 29 + GREEN Base - (PK10) | |
| 728138016P | 10 | Tube 29 + ORANGE Base - (PK10) | |
| 794020201P | 10 | Tube 29 + TOFFEE Base - (PK10) | |

Changer Common Spares CF8xxx & CF7xxx

Bases



| Part Number | Pack Qty | Description | |
|-------------|----------|-----------------------------|--|
| 793807001P | 10 | T19 Grey Base (PK10) | |
| 728137003P | 10 | T19 White Base (PK10) | |
| 794604001P | 10 | T20 Lblue Base (PK10) | |
| 728138011P | 10 | T20 Orange Base (PK10) | |
| 728134013P | 10 | T22 Aztec Gold Base (PK10) | |
| 795192001P | 10 | T22 Honey Beige Base (PK10) | |
| 728136012P | 10 | T22 Red Base (PK10) | |
| 794293001P | 10 | T24 Lgreen Base (PK10) | |
| 793585001P | 10 | T24 Pink Base (PK10) | |
| 728133005P | 10 | T24 Yellow Base (PK10) | |
| 793530001P | 10 | T25 Black Base (PK10) | |
| 728135009P | 10 | T25 Purple Base (PK10) | |
| 728137008P | 10 | T27 Blue Base (PK10) | |
| 794280001P | 10 | T27 Brown Base (PK10) | |
| 728132014P | 10 | T27 Grey Base (PK10) | |
| 796282001P | 10 | T27 White Base (PK10) | |
| 728131001P | 10 | T29 Green Base (PK10) | |
| 728130015P | 10 | T29 Orange Base (PK10) | |
| 795105001P | 10 | T29 Toffee Base (PK10) | |

Coin Storage Cassette Lock



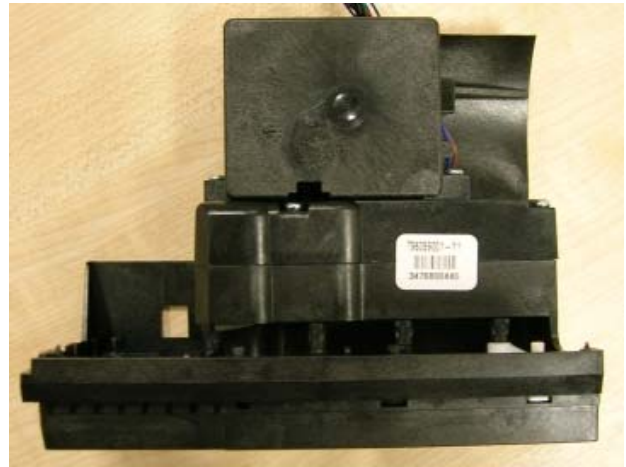
| Part Number | Pack Qty | Description | |
|-------------|----------|--------------------|--|
| 167301002P | 100 | TUBE CASSETTE LOCK | |

Solenoid Bank



| Part Number | Pack Qty | Description | |
|-------------|----------|-----------------------|--|
| 793690001 | 5 | PK5 NGC SOLENOID ASSY | |

Dispenser Module



| Part Number | Pack Qty | Description | |
|-------------|----------|--------------------------|--|
| 798068004P | 1 | Dispenser Module - BLACK | |

Changer Common Spares CF8xxx & CF7xxx

Reject Lever



| Part Number | Pack Qty | Description | |
|-------------|----------|---------------------|--|
| 728055001P | 10 | Reject Lever | |
| 792479001P | 100 | Reject Lever Spring | |

Acceptor Body Latch



| Part Number | Pack Qty | Description | |
|-------------|----------|---------------------|--|
| 728660001P | 100 | Acceptor Body Latch | |

Acceptor Lid Spring



| Part Number | Pack Qty | Description | |
|-------------|----------|---------------------|--|
| 793674001 | 25 | Acceptor Lid Spring | |

Changer Common Spares CF8xxx & CF7xxx

Cable Entry Cover



| Part Number | Pack Qty | Description |
|-------------|----------|-------------------|
| 795890004P | 25 | Cable Entry Cover |

Cassette Parts



| Part Number | Pack Qty | Description |
|-------------|----------|------------------------|
| 728211004P | 5 | Cassette Chassis |
| 728213003P | 5 | Cassette Cover |
| 730851001P | 50 | Cassette Label |
| 728217001P | 25 | Cassette Release Latch |

Chassis



| Part Number | Pack Qty | Description |
|-------------|----------|----------------|
| 798313002P | 1 | CF8xxx Chassis |

Changer Common Spares CF8xxx & CF7xxx

Dispenser



| Part Number | Pack Qty | Description | |
|-------------|----------|-----------------------------------|--|
| 793307001P | 5 | Dispenser Base Plate | |
| 727714002P | 5 | Dispenser D18 (D) Dispenser Arm | |
| 727716001P | 5 | Dispenser D19 (A-C) Dispenser Arm | |
| 792602001P | 5 | Dispenser MK2 (E) Dispenser Arm | |
| 727729001P | 5 | Scavange Blade | |

MMI Assembly Components



| Part Number | Pack Qty | Description | |
|-------------|----------|-----------------|--|
| 728422002P | 100 | MMI Door Spring | |
| 728184002P | 20 | MMI Hinge | |
| 728157001P | 10 | MMI Reject Door | |

Acoustic Module



| Part Number | Pack Qty | Description | |
|-------------|----------|-----------------|--|
| 729174001P | 1 | Acoustic Module | |

Changer Common Spares CF8xxx & CF7xxx

PCB Covers



| Part Number | Pack Qty | Description | |
|-------------|----------|-----------------|--|
| 795824002P | 10 | PCB Cover Upper | |
| 795892003P | 10 | PCB Lower Cover | |

Sensor Cover



| Part Number | Pack Qty | Description | |
|-------------|----------|--------------|--|
| 728042001P | 10 | Sensor Cover | |

Separator A Insert



| Part Number | Pack Qty | Description | |
|-------------|----------|--------------------------------|--|
| 728144001P | 25 | SK NGC S12 ROUTE A INSERT PK25 | |

Separator Gates



| Part Number | Pack Qty | Description | |
|-------------|----------|----------------------------------|--|
| 728195008P | 50 | SK CASHBOX / D GATE - BLACK PK50 | |
| 728197007P | 50 | SK NGC S19 CABOX F. GATE PK50 | |
| 728199001P | 100 | SK NGC S4 ACCEPT GATE PK100 | |
| 728197002P | 100 | SK NGC S6 FLAP GATE PK100 | |
| 728195003P | 50 | SK NGC S7 CASHBOX L GATE PK50 | |
| 728193004P | 50 | SK NGC S8 EA L GATE PK50 | |
| 728191005P | 50 | SK NGC S9 BC GATE PK50 | |

Snubbers



| Part Number | Pack Qty | Description | |
|-------------|----------|------------------------------|--|
| 728419002P | 25 | SK NGC RAMP END SNUBBER PK25 | |
| 728411001P | 5 | SK NGC RAMP SNUBBER PK5 | |

Changer Common Spares CF8xxx & CF7xxx

Screws



| Part Number | Pack Qty | Description | |
|-------------|----------|--------------------------------|--|
| 792364001P | 50 | SK SCREW PT K25X7 Z&P PAN PK50 | |
| 729569001P | 50 | SK SCREW PT K30X8 CSK PKG 50 | |
| 729381001P | 50 | SK SCREW PT K30X8 PAN PKG 50 | |

EC6000 Spares

Coin Storage Cassettes (Euro)



| Part Number | Pack Qty | Description | |
|-------------|----------|-----------------------------------|--|
| 796198017 | 1 | € AA Cassette (5c, 10c, 50c, 20c) | |
| 796206002 | 1 | € AB Cassette (10c, 5c, 20c, €1) | |

Coin Storage Cassettes (UK)



| Part Number | Pack Qty | Description | |
|-------------|----------|-----------------------------------|--|
| 796853007 | 1 | £ AA Cassette (1p, 5p, 2p, 20p) | |
| 796855006 | 1 | £ AB Cassette (5p, 20p, 50p, 10p) | |

Coin Storage Cassettes (Other)



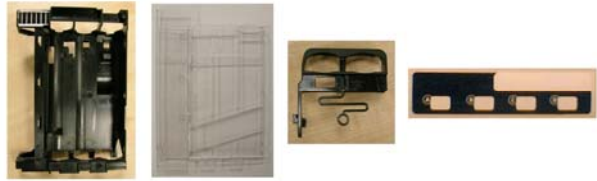
| Part Number | Pack Qty | Description | |
|-------------|----------|--|--|
| 796191029 | 1 | Bulgaria AA Cassette (20s, 5s, 10s, 50s) | |
| 796196030 | 1 | Bulgaria AB Cassette (20s, 5s, 1s, 50s) | |
| 796196035 | 1 | Croatia AA Cassette (50L, 50L, 2K, 1K) | |
| 796190033P | 1 | Croatia AB Cassette (1K, 50L, 2K, 5K) | |
| 796851003 | 1 | Czech Republic AA Cassette (1K, 2K, 5K, 10K) | |
| 796859004 | 1 | Hungary AA Cassette (20F, 5F, 50F, 10F) | |
| 796857005 | 1 | Hungary AB Cassette (20F, 5F, 10F, 10F) | |
| 796853002 | 1 | Poland AA Cassette (50g, 10g, 20g, 1Z) | |
| 796854010 | 1 | Romania AA Cassette (10B, 10B, 10B, 50B) | |
| 796855001 | 1 | Russia AA Cassette (5R, 1R, 10R, 2R) | |
| 796850012 | 1 | Slovakia AA Cassette (1K, 2K, 5K, 2K) | |
| 796851008 | 1 | South Africa AA Cassette (1R, 10c, 20c, 50c) | |
| 796859009 | 1 | South Africa AB Cassette (50c, 1R, 5Rn, 2R) | |
| 796852011 | 1 | Sweden AA Cassette (1Kr, - , 5Kr, 1Kr) | |
| 796197021 | 1 | Ukraine AA Cassette (5K, 25K, 50K, 1G) | |
| 796193028 | 1 | Ukraine AB Cassette (5K, 25K, 50K, 50K) | |

Cable Entry Cover



| Part Number | Pack Qty | Description |
|-------------|----------|-------------------|
| 795890004P | 25 | Cable Entry Cover |

Cassette Parts



| Part Number | Pack Qty | Description |
|-------------|----------|------------------------|
| 728213003P | 5 | Cassette Cover |
| 796151001P | 50 | Cassette Label |
| 795889003P | 25 | Cassette Release Latch |
| 796106001P | 5 | Cassette Skeleton AA |
| 796104002P | 5 | Cassette Skeleton AB |

Chassis



| Part Number | Pack Qty | Description |
|-------------|----------|---------------|
| 795896001P | 1 | Black Chassis |

Dispenser Module



| Part Number | Pack Qty | Description |
|-------------|----------|-------------------------|
| 796059001P | 1 | EC6000 Dispenser Module |

MMI Module



| Part Number | Pack Qty | Description |
|-------------|----------|-------------|
| 795998001P | 1 | EC6000 MMI |

MMI Assembly Components



| Part Number | Pack Qty | Description |
|-------------|----------|-----------------|
| 728422002P | 100 | MMI Door Spring |
| 795930001P | 20 | MMI Hinge |
| 728157001P | 10 | MMI Reject Door |

PCB Covers



| Part Number | Pack Qty | Description | |
|-------------|----------|-----------------|--|
| 795824002P | 10 | PCB Cover Upper | |
| 795892003P | 10 | PCB Lower Cover | |

Top Module Assembly



| Part Number | Pack Qty | Description | |
|-------------|----------|-------------------|--|
| 796224001P | 1 | EC6000 Top Module | |

Sensor Cover



| Part Number | Pack Qty | Description | |
|-------------|----------|--------------|--|
| 796148001P | 50 | EC6000 Label | |

EC6000 PCA



| Part Number | Pack Qty | Description | |
|-------------|----------|-----------------|--|
| 111556501P | 1 | EC6000 EXEC PCA | |
| 111553496P | 1 | EC6000 MDB PCA | |

Machine Interface Looms (CF7xxx / EC6000)

EXEC Machine Loom



| Part Number | Pack Qty | Description | |
|-------------|----------|-------------------|--|
| 791994001C | 1 | Exec Machine Loom | |

This loom incorporates both the Power connector and the Communications connector.

MDB Machine Loom



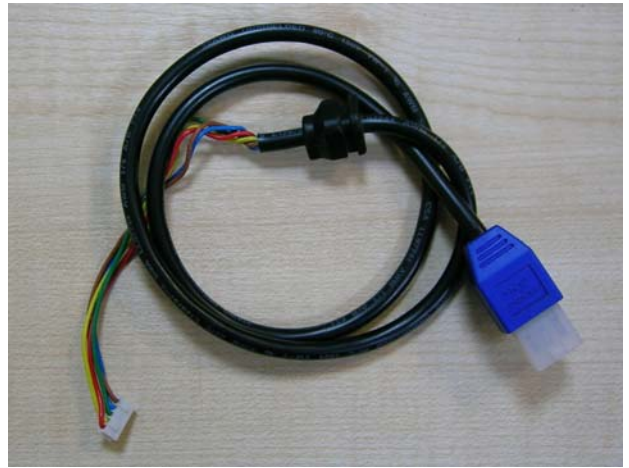
| Part Number | Pack Qty | Description | |
|-------------|----------|------------------|--|
| 729069001C | 1 | MDB Machine Loom | |

BDV Machine Loom



| Part Number | Pack Qty | Description | |
|-------------|----------|------------------|--|
| 792000001C | 1 | BDV Machine Loom | |

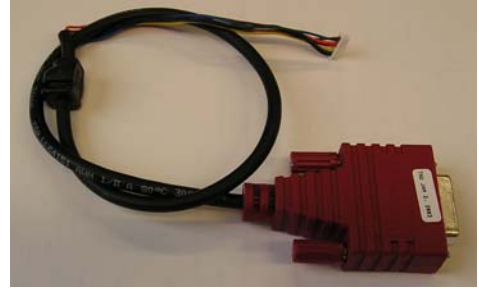
MDB Peripheral Loom



| Part Number | Pack Qty | Description | |
|-------------|----------|---------------------|--|
| 729056001C | 1 | MDB Peripheral Loom | |

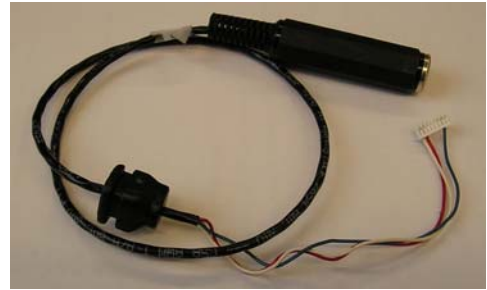
Audit Looms (CF7xxx / EC6000)

Printer Loom



| Part Number | Pack Qty | Description | |
|-------------|----------|-----------------------------------|--|
| 729043001C | 1 | Printer Loom | |
| 216762001C | 1 | Printer Loom - Tekno Audit System | |

DEX Audit Loom



| Part Number | Pack Qty | Description | |
|-------------|----------|----------------|--|
| 729027001C | 1 | DEX Audit Loom | |

CF7xxx IrDA Audit Loom



| Part Number | Pack Qty | Description | |
|-------------|----------|---------------------|--|
| 217483001 | 1 | CF7000 FiRDA Module | |

FIRDA MODULE 15W KIT



| Part Number | Pack Qty | Description | |
|-------------|----------|----------------------|--|
| 217789001 | 1 | FIRDA MODULE 15W KIT | |

Audit Looms (VAM / CHG)

VAM - CHG DEX JACK



| Part Number | Pack Qty | Description | |
|-------------|----------|--------------------|--|
| 798367011C | 1 | VAM - CHG DEX JACK | |

VAM - CF6xx Direct connect



| Part Number | Pack Qty | Description | |
|-------------|----------|----------------------------|--|
| 798360006C | 1 | VAM - CF6xx Direct connect | |

VAM - CHG DB15



| Part Number | Pack Qty | Description | |
|-------------|----------|----------------|--|
| 798365012C | 1 | VAM - CHG DB15 | |

Audit Looms (VAM / CHG)


VAM - CF7xxx Direct connect




| Part Number | Pack Qty | Description | |
|-------------|----------|-----------------------------|--|
| 798364004C | 1 | VAM - CF7xxx Direct connect | |

Audit Looms (VAM / VMC)

| | | | |
|----------------------|-----------------|--------------------|--|
| VAM - VMC DB9 | | |  |
| Part Number | Pack Qty | Description | |
| 798365017C | 1 | VAM - VMC DB9 | |

| | | | |
|--------------------------------------|-----------------|-------------------------------|--|
| VAM - VMC DEX JACK - Straight | | |  |
| Part Number | Pack Qty | Description | |
| 798364021C | 1 | VAM - VMC DEX JACK - Straight | |

| | | | |
|-----------------------------------|-----------------|----------------------------|--|
| VAM - Necta Direct Connect | | |  |
| Part Number | Pack Qty | Description | |
| 798366020C | 1 | VAM - Necta Direct Connect | |

Audit Looms (VAM / VMC)

VAM - VMC DEX JACK



| Part Number | Pack Qty | Description | |
|-------------|----------|--------------------|--|
| 798367016C | 1 | VAM - VMC DEX JACK | |

Advanced 5000

A5K Antenna



| Part Number | Pack Qty | Description | |
|-------------|----------|-------------|--|
| 217941001P | 1 | Antenna | |

A5K MDB Loom



| Part Number | Pack Qty | Description | |
|-------------|----------|--------------------|--|
| 216571001C | 1 | A5K MDB Loom | |
| 216571001P | 5 | A5K MDB Loom - 5Pk | |

A5K Audit Loom DB15



| Part Number | Pack Qty | Description | |
|-------------|----------|---------------------|--|
| 215631036C | 1 | A5K Audit Loom DB15 | |

A5K Audit Loom DEX




| Part Number | Pack Qty | Description | |
|-------------|----------|--------------------------|--|
| 215637033C | 1 | A5K Audit Loom DEX | |
| 215637033P | 5 | A5K Audit Loom DEX - 5Pk | |


A5K DEX to DB9 Loom




| Part Number | Pack Qty | Description | |
|-------------|----------|---------------------|--|
| 215633035C | 1 | A5K DEX to DB9 Loom | |

mei-pay Series

| USB Cable | | |  |
|------------------|----------|----------------------------|---|
| Part Number | Pack Qty | Description | |
| 149881002C | 1 | USB CABLE TYPE A-B 2M LONG | |

| mei-pay MDB Reader | | |  |
|--------------------------------|----------|--------------------------|--|
| Part Number | Pack Qty | Description | |
| 798201014 | 1 | S mei-pay MDB Reader PK1 | |
| Reader supplied with LED Cable | | | |

| mei-pay mdb MDB Y-Loom | | |  |
|-------------------------------|----------|------------------------------|--|
| Part Number | Pack Qty | Description | |
| 798193002 | 1 | S mei-pay mdb MDB Y-Loom PK1 | |

mei-pay Master Reader



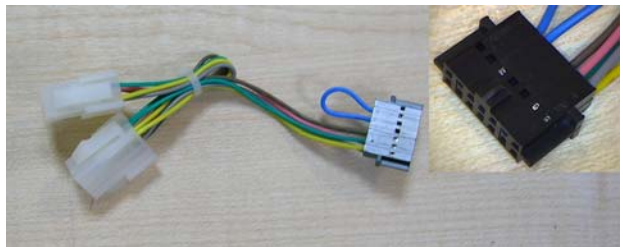
| Part Number | Pack Qty | Description | |
|--------------------------------|----------|-----------------------------|--|
| 798207016 | 1 | S mei-pay Master Reader PK1 | |
| Reader supplied with LED Cable | | | |

mei-pay master MDB Loom



| Part Number | Pack Qty | Description | |
|-------------|----------|-------------------------------|--|
| 798195006 | 1 | mei-pay master MDB power loom | |

mei-pay master MDB Periferal Loom



| Part Number | Pack Qty | Description | |
|-------------|----------|-----------------------------------|--|
| 798204048 | 1 | mei-pay master MDB periferal loom | |

mei-pay master Exec Loom



| Part Number | Pack Qty | Description | |
|-------------|----------|--------------------------------|--|
| 798199004 | 1 | S mei-pay master Exec Loom PK1 | |

mei-pay master EXEC Peripheral Loom



| Part Number | Pack Qty | Description | |
|-------------|----------|------------------------------------|--|
| 798202049 | 1 | mei-pay master EXEC periferal loom | |

mei-pay master BDV Loom



| Part Number | Pack Qty | Description | |
|-------------|----------|-------------------------------|--|
| 798197005 | 1 | S mei-pay master BDV Loom PK1 | |

mei-pay master BDV Peripheral Loom

| Part Number | Pack Qty | Description | |
|-------------|----------|-----------------------------------|--|
| 798207050 | 1 | mei-pay master BDV periferal loom | |

mei-pay Display



| Part Number | Pack Qty | Description | |
|-------------|----------|-----------------------|--|
| 798202027 | 1 | S mei-pay Display PK1 | |

e-key Bezel



| Part Number | Pack Qty | Description | |
|-------------|----------|---------------------------|--|
| 798206003 | 1 | S mei-pay e-key Bezel PK1 | |

Bezel supplied with Coax Cable

mei-pay Series

e-key



| Part Number | Pack Qty | Description | |
|-------------|----------|----------------------|--|
| 798208007 | 50 | S mei-pay e-key PK50 | |

Multi Bezel



| Part Number | Pack Qty | Description | |
|-------------|----------|---------------------------|--|
| 798200006 | 1 | S mei-pay Multi Bezel PK1 | |

Bezel supplied with Coax Cable

e-tag



| Part Number | Pack Qty | Description | |
|-------------|----------|----------------------|--|
| 798206008 | 50 | S mei-pay e-tag PK50 | |

mei-pay Series

e-card



| Part Number | Pack Qty | Description | |
|-------------|----------|-----------------------|--|
| 798202022 | 50 | S mei-pay e-card PK50 | |

LED Cable



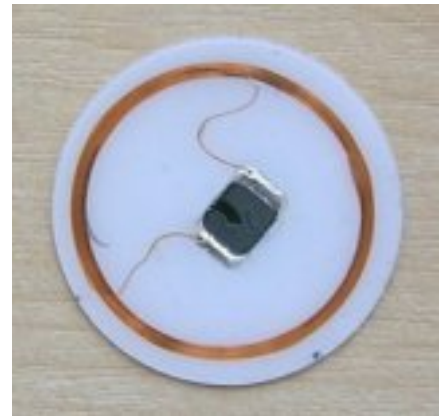
| Part Number | Pack Qty | Description | |
|-------------|----------|-------------------------|--|
| 798191003 | 1 | S mei-pay LED Cable PK1 | |

mei-pay Terminal



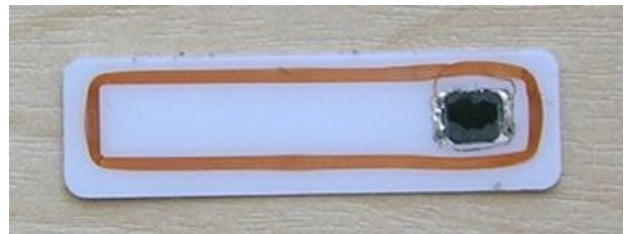
| Part Number | Pack Qty | Description | |
|-------------|----------|------------------------|--|
| 798204168 | 1 | S mei-pay Terminal PK1 | |

e-sticker Round



| Part Number | Pack Qty | Description | |
|-------------|----------|--------------------------------|--|
| 798200023 | 50 | S mei-pay e-sticker Round PK50 | |

e-sticker Rectangular



| Part Number | Pack Qty | Description | |
|-------------|----------|--------------------------------------|--|
| 798208024 | 50 | S mei-pay e-sticker Rectangular PK50 | |

Series 2000

Stacker/Drive Assembly



| Part Number | Pack Qty | Description | |
|-------------|----------|---|--|
| 250010195P | 1 | STACKER / DRIVE ASSEMBLY (EURO) | |
| 250013043P | 1 | STACKER / DRIVE ASSEMBLY (RUSSIA / SAUDI) | |

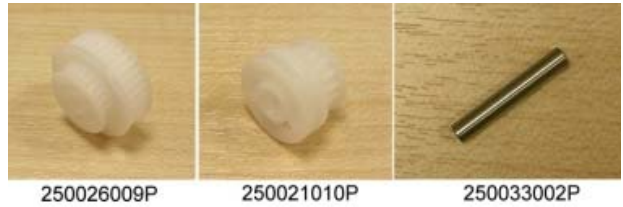
Belts



| Part Number | Pack Qty | Description | |
|-------------|----------|--------------------------------|--|
| 250028162P | 100 | S 100 PK BELT TIMING 143T KEVL | |
| 250023014P | 100 | TIMING BELT, 56T, MXL PK100 | |

Series 2000

Pulley



| Part Number | Pack Qty | Description | |
|-------------|----------|-------------------------------|--|
| 250026009P | 25 | PULLEY, COMPOUND 37T/24T PK25 | |
| 250021010P | 25 | PULLEY,WHEEL 16T/TIRE PK25 | |
| 250033002P | 100 | SHAFT, PULLEY PK100 | |

Springs



| Part Number | Pack Qty | Description | |
|-------------|----------|-------------------------------|--|
| 250046002P | 75 | SPRING, LIFT LED HOUSING PK75 | |
| 250045016P | 100 | SPRING, TENSIONER PK100 | |
| 250048006P | 75 | SPRINTORSION LEDHSG LACH PK75 | |

Tensioner Asembly



| Part Number | Pack Qty | Description | |
|-------------|----------|--------------------|--|
| 250064067 | 5 | TENSIONER ASSEMBLY | |

Series 2000

Wheels



| Part Number | Pack Qty | Description | |
|-------------|----------|------------------|--|
| 250025013P | 100 | TIRE (ORC) PK100 | |

Covers



250028020P



250023031P

| Part Number | Pack Qty | Description | |
|-------------|----------|-------------------------|--|
| 250028020P | 25 | COVER, GEARBOX PK25 | |
| 250023031P | 25 | COVER, LED HOUSING PK25 | |

Gears



250028003P



250020002P



250035001P

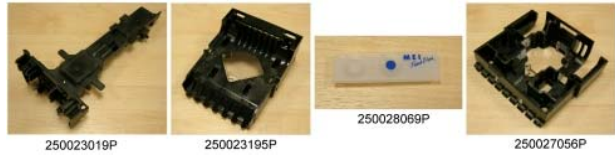


250026004P

| Part Number | Pack Qty | Description | |
|-------------|----------|-------------------------------|--|
| 250028003P | 50 | COMPD GEAR38/48 DP 9/18T PK50 | |
| 250020002P | 50 | COMPD. GEAR 48DP 10/18T PK50 | |
| 250035001P | 50 | SHAFT, GEAR PK50 | |
| 250026004P | 50 | WORM 32DPN/13T SPUR GEAR PK50 | |

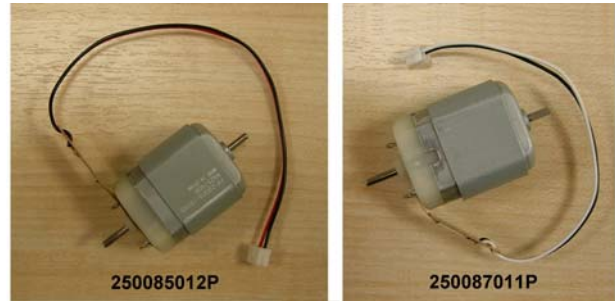
Series 2000

Housing



| Part Number | Pack Qty | Description | |
|-------------|----------|-----------------------------------|--|
| 250023019P | 5 | HOUSING, GEARBOX PK5 | |
| 250023195P | 10 | LED HOUSING PK10 - (RUSSIA/SAUDI) | |
| 250028209P | 10 | LED HOUSING PK10 - (EURO) | |
| 250028069P | 10 | SEAL, LED HOUSING PK10 | |
| 250027056P | 25 | SENSOR HOUSING (COMPLETE)PK25 | |

Motors



| Part Number | Pack Qty | Description | |
|-------------|----------|--------------------------------|--|
| 250087011P | 5 | SK MOTOR,STKR.W/FIEXI HAR.PK5E | |
| 250085012P | 5 | SK MOTOR,TRAN.W/FLEXI HARN.PK5 | |

Plates



| Part Number | Pack Qty | Description | |
|-------------|----------|----------------------------------|--|
| 250028221P | 10 | FRICION PUSHER PLATE PK10 (Euro) | |
| 250020220P | 10 | PUSHER PLATE FRICTION STRIP | |
| 250020024P | 10 | PUSHER PLATE PK10 (Russia/Saudi) | |

Rings



| Part Number | Pack Qty | Description | |
|-------------|----------|-------------------------------|--|
| 250029016P | 100 | PUSHRING(SCISS RET CLIP)PK100 | |

Shaft



| Part Number | Pack Qty | Description | |
|-------------|----------|------------------------------|--|
| 250037005P | 25 | SHAFT, CARTRIDGE LATCH PK25 | |
| 250010019P | 5 | TRANSPORT SHAFT ASSEMBLY PK5 | |

Stacker



| Part Number | Pack Qty | Description | |
|-------------|----------|------------------------|--|
| 250018015P | 10 | STACKER SHAFT ASSEMBLY | |

Tach Disk



| Part Number | Pack Qty | Description | |
|-------------|----------|--------------------------|--|
| 250020080P | 25 | TACH DISK 12 BLADE PK 25 | |

Washers



| Part Number | Pack Qty | Description | |
|-------------|----------|---------------------|--|
| 250032011P | 100 | THRUST WASHER PK100 | |

Gaskets



| Part Number | Pack Qty | Description | |
|-------------|----------|----------------------------------|--|
| 250065156P | 5 | SK GASKET, SENSOR HOUSING BULK 5 | |

Series 2000

Looms



| Part Number | Pack Qty | Description | |
|-------------|----------|----------------------------------|--|
| 250073003P | 10 | CABLASSY CTRL PCB TO LED PK10 | |
| 250071043C | 1 | CABLE ASSEMBLY,MDB/24VAC (375mm) | |
| 250072078C | 1 | CABLE ASSEMBLY,MDB/24VAC (575mm) | |
| 250078053P | 10 | CABLE,CTL PCB TO SENS PCB PK10 | |
| 250072034 | 1 | SERIES 2000 MDB/BDS HARNESS | |
| 250077084C | 1 | VN PARALLEL LOOM BLUE | |
| 250075085C | 1 | VN PARALLEL LOOM RED | |

Sensor PCA



| Part Number | Pack Qty | Description | |
|-------------|----------|----------------------------------|--|
| 250063191 | 1 | PK1 ASSY VN 67MM 530NM SENSOR BD | |
| 250060047 | 1 | VN ENHANCED SENSOR BD (RUSSIA) | |

LED



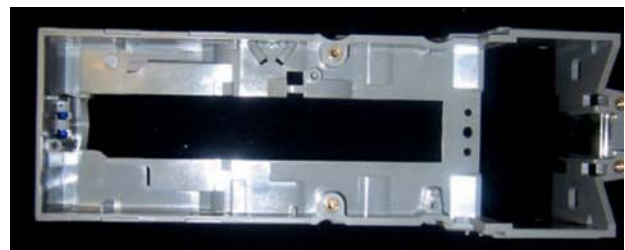
| Part Number | Pack Qty | Description | |
|-------------|----------|----------------|--|
| 250029033P | 15 | LENS, LED PK15 | |

LED Control Boards



| Part Number | Pack Qty | Description | |
|-------------|----------|--|--|
| 250065190 | 1 | PK1 ASSY VN 530/660/940NM 67M LED - (EURO/SAUDI) | |
| 250062063 | 1 | SK S2000 PREM TRI-PEL LED BD - (RUSSIA) | |

Chassis



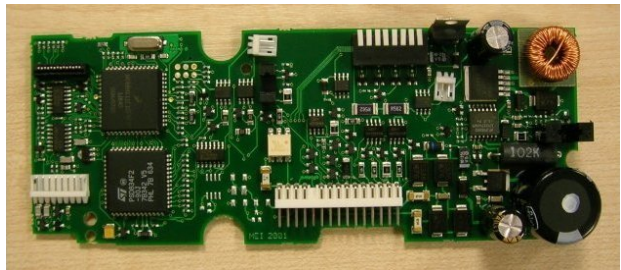
| Part Number | Pack Qty | Description | |
|-------------|----------|-------------|--|
| 250027017 | 1 | Chassis | |

Dip Switch Labels



| Part Number | Pack Qty | Description |
|-------------|----------|--|
| 250051322P | 20 | PK20 DIP SWITCH LABEL VN 26 EURO-ENGLISH |
| 250059340P | 20 | PK20 DIP SWITCH LABEL VN 26 EURO-FRENCH |
| 250057341P | 20 | PK20 DIP SWITCH LABEL VN 26 EURO-GERMAN |
| 250055342P | 20 | PK20 DIP SWITCH LABEL VN 26 EURO-ITALIAN |
| 250053343P | 20 | PK20 DIP SWITCH LABEL VN 26 EURO-SPANISH |

Control Boards



| Part Number | Pack Qty | Description |
|-------------|----------|-------------------------------|
| 250061193 | 1 | PK1 ASSY VN 24V AE2800 CTL BD |

Screws



203732001P

203729001P

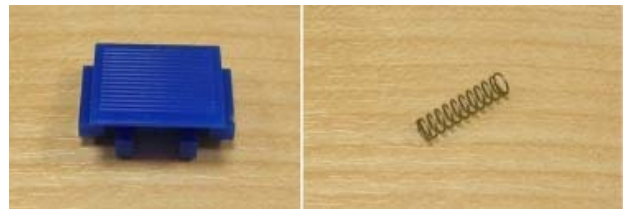
| Part Number | Pack Qty | Description |
|-------------|----------|-------------------------------|
| 203732001P | 100 | SCRW4X.38TYP25PANHDPOSDRPK100 |
| 203729001P | 100 | SCRW4X.50TYP25PANHDPOSDRPK100 |

PCB Covers



| Part Number | Pack Qty | Description | |
|-------------|----------|-------------------------|--|
| 250022040P | 25 | COVER, CONTROL PCB PK25 | |

Magazine Latch



| Part Number | Pack Qty | Description | |
|-------------|----------|------------------------------|--|
| 250029099P | 50 | MAGAZINE LATCH PK50 | |
| 250044003P | 100 | SPRING, MAGAZINE LATCH PK100 | |

Magazines



| Part Number | Pack Qty | Description | |
|-------------|----------|----------------------------|--|
| 250060184 | 1 | U2 (200) MAGAZINE - EURO | |
| 250068185 | 1 | U3 (300) MAGAZINE - EURO | |
| 250066186 | 1 | U5 (500) MAGAZINE - EURO | |
| 250064187 | 1 | U5 (500) MAGAZINE - RUSSIA | |
| 250069017 | 1 | U5 (500) MAGAZINE - SAUDI | |
| 250062188 | 1 | U7 (700) MAGAZINE - RUSSIA | |
| 250068021 | 1 | U7 (700) MAGAZINE - SAUDI | |

Magazine Prism



| Part Number | Pack Qty | Description |
|-------------|----------|-------------------------------|
| 250027176P | 5 | SK PRISM UNPLATED W/RESET PK5 |

Magazine Labels

COUPON SETUP
Coupon recognizer requires all switches to be OFF.
Press ● on rear of LED cartridge to enter coupon mode.
Insert completed coupon. LED will flash 10 times upon successful completion.

Diagnosis (RED LED LOCATED ON REAR OF LED CARTRIDGE)

| LED ON = ON | LED OFF = power off |
|------------------|----------------------------|
| # FLASHES | STATUS |
| 1 | bill path jammed |
| 2 | disabled from system |
| 3 | needs cleaning |
| 4 | cross channel blocked |
| 5 | magazine removed |
| continuous, slow | soft failure; replace unit |
| continuous, fast | stacker full |

REMOVING MAGAZINE
Push latch on acceptor forward. Slide magazine bar and latch and pull away from acceptor.

CLEANING THE BILL PATH
Separate the metal bar and pull back. Remove both LED cartridge and magazine for full bill path access.

www.meigroup.com

| Part Number | Pack Qty | Description |
|-------------|----------|----------------------------------|
| 250059328P | 15 | PK15 EURO MAGAZINE LABEL ENGLISH |
| 250057329P | 15 | PK15 EURO MAGAZINE LABEL FRENCH |
| 250050331P | 15 | PK15 EURO MAGAZINE LABEL GERMAN |
| 250058332P | 15 | PK15 EURO MAGAZINE LABEL ITALIAN |
| 250052330P | 15 | PK15 EURO MAGAZINE LABEL SPANISH |

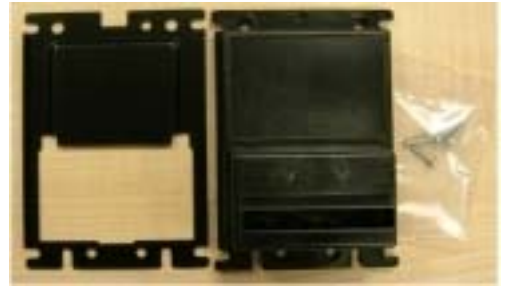
Magazine Locking Hasp



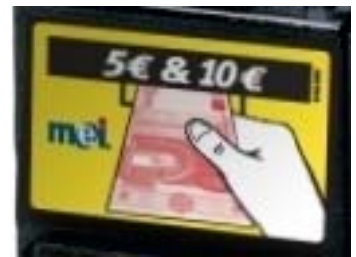
| Part Number | Pack Qty | Description |
|-------------|----------|---------------------------|
| 250063196 | 2 | MAGAZINE LOCKING HASP KIT |

Bezel Mounting Plate (Imperial)

| Part Number | Pack Qty | Description | |
|-------------|----------|-----------------------------|--|
| 250067030 | 1 | Bill Validator Mounting Kit | |

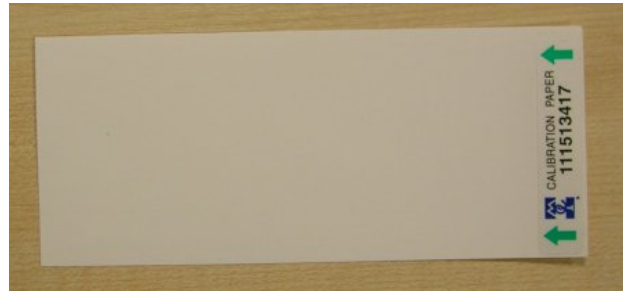
Bezel Kits

| Part Number | Pack Qty | Description | |
|-------------|----------|-------------------------------------|--|
| 250063174 | 1 | ANTI VANDAL BEZEL KIT | |
| 250065178 | 1 | EA BEZEL ARMOR COVER KIT - EURO | |
| 250063179 | 1 | EA BEZEL COMPACT COVER KIT - EURO | |
| 250068180 | 1 | EA BEZEL COMPACT COVER KIT - RUSSIA | |
| 250066181 | 1 | EA BEZEL COMPACT COVER KIT - SAUDI | |

Bezel Labels

| Part Number | Pack Qty | Description | |
|-------------|----------|----------------------------|--|
| 250053321P | 10 | PK10 EURO LABEL SET, BEZEL | |

VN Calibration Paper



| Part Number | Pack Qty | Description | |
|-------------|----------|-------------------|--|
| 111513417P | 10 | CALIBRATION PAPER | |

Rollers



250029011P



250025030P

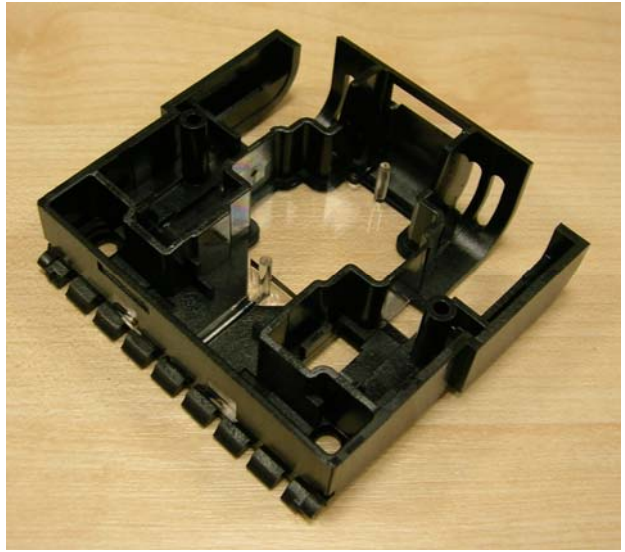


250040005P

| Part Number | Pack Qty | Description | |
|-------------|----------|----------------------------|--|
| 250025030P | 75 | PINCH ROLLER HOUSING PK75 | |
| 250029011P | 25 | PINCH ROLLER PK25 | |
| 250040005P | 100 | SPRING, PINCH ROLLER PK100 | |

Series 2000 12v

Housing



| Part Number | Pack Qty | Description | |
|-------------|----------|------------------------------------|--|
| 250023254P | 25 | SENSOR HOUSING (12v COMPLETE) PK25 | |

Looms



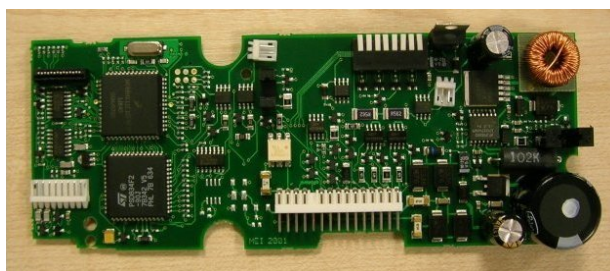
| Part Number | Pack Qty | Description | |
|-------------|----------|-----------------------------------|--|
| 250073106C | 1 | CABLE, MDB, SERIES 2000, 12Vb, EU | |

Sensor PCA



| Part Number | Pack Qty | Description | |
|-------------|----------|---|--|
| 250060226 | 1 | PK1 ASSY 12VB S2K ENHANCED SENSOR BD EU | |
| 250067219 | 5 | SK 12vB Refective Sensor Board PK5 | |

Control Boards



| Part Number | Pack Qty | Description | |
|-------------|----------|------------------------------------|--|
| 250062225 | 1 | PK1 ASSY, S2K 12V BATT CTL PCB, EU | |

Bezel Kits



| Part Number | Pack Qty | Description | |
|-------------|----------|-----------------------------------|--|
| 250064229 | 1 | PK1 CVL BEZEL ASSY (LARGE FLANGE) | |
| 250066228 | 1 | PK1 CVS BEZEL ASSY (SMALL FLANGE) | |

CF95xx**4-Way Separator Module**

| Part Number | Pack Qty | Description | |
|-------------|----------|-----------------|--|
| 72-11-3484C | 1 | 4 WAY SEPARATOR | |

8-Way Separator Module

| Part Number | Pack Qty | Description | |
|-------------|----------|-----------------|--|
| 199430001C | 1 | 8 WAY SEPARATOR | |

Coin Cups

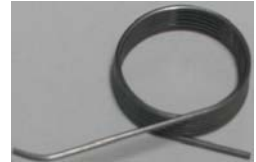
| Part Number | Pack Qty | Description | |
|-------------|----------|------------------------|--|
| 728511002 | 50 | CF95xx HOOKED COIN CUP | |

Coin Cup Adaptor

| Part Number | Pack Qty | Description | |
|-------------|----------|------------------|--|
| 149834047 | 25 | COIN CUP ADAPTOR | |

Reject Levers

| Part Number | Pack Qty | Description | |
|-------------|----------|----------------------------|--|
| 710584003 | 50 | CF95xx YELLOW REJECT LEVER | |

Reject Lever Spring

| Part Number | Pack Qty | Description | |
|-------------|----------|---------------------|--|
| 149837037 | 50 | REJECT LEVER SPRING | |

Indirect Entry Deck

| Part Number | Pack Qty | Description | |
|-------------|----------|--------------------------|--|
| 149834042 | 50 | INDIRECT COIN ENTRY DECK | |

Indirect Entry Lid

| Part Number | Pack Qty | Description | |
|-------------|----------|--------------------|--|
| 728524002 | 50 | INDIRECT ENTRY LID | |

CF95xx Reject Covers

| Part Number | Pack Qty | Description | |
|-------------|----------|----------------------------|--|
| 730715007 | 10 | CF95xx REJECT COVER TYPE A | |
| 730717006 | 10 | CF95xx REJECT COVER TYPE B | |
| 730719005 | 10 | CF95xx REJECT COVER TYPE C | |

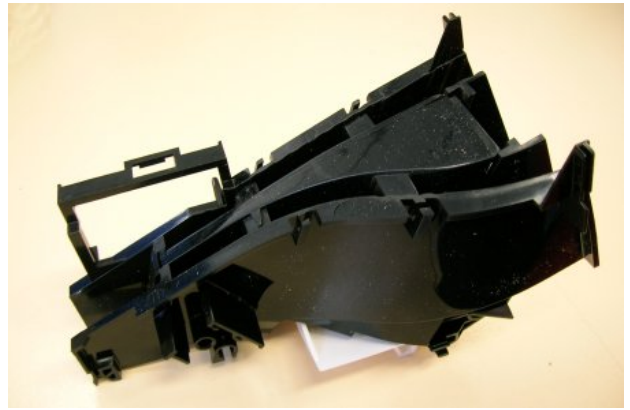
Validator Screws

| Part Number | Pack Qty | Description | |
|-------------|----------|----------------------------|--|
| 149835033 | 100 | NO 6 x 5/16 COIN CUP SCREW | |

Machine Interface Loom (Others)

| Part Number | Pack Qty | Description | |
|-------------|----------|-------------------------|--|
| 72-10-0856C | 1 | ACCEPTOR LOOM (MS130B1) | |

Y-Chute



| Part Number | Pack Qty | Description | |
|-------------|----------|------------------|--|
| 716775001 | 1 | STANDARD Y-CHUTE | |

Channel Pins



| Part Number | Pack Qty | Description | |
|-------------|----------|--------------------------|--|
| 149837032 | 100 | PLASTIC CHANNEL PIN LONG | |

CF3xx

Acceptor Discriminators (EURO)

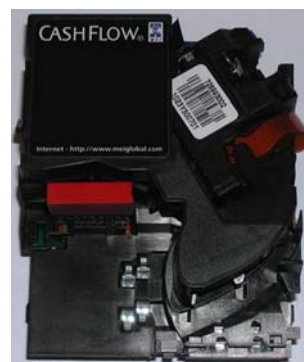


| Part Number | Pack Qty | Description | |
|-------------|----------|--------------------------------------|--|
| 190756035 | 1 | 330 DISCIMINATOR EU'5468 D/A DUALPOL | |
| 190757043 | 1 | 330 DISCIMINATOR EU'5468 D/A SERIAL | |
| 190755044 | 1 | 330 DISCRIMINATOR EU'5468 D/A STD212 | |

Acceptor Discriminators (UK)



| Part Number | Pack Qty | Description | |
|-------------|----------|--------------------------------------|--|
| 190758039 | 1 | 330 DISCIMINATOR GB'6776 D/A DUALPOL | |

Acceptor Discriminators (OTHER)

| Part Number | Pack Qty | Description | |
|-------------|----------|---|--|
| 190759042 | 1 | 330 DISCIMINATOR SW/JTKN D/A STD212 | |
| 190752037 | 1 | 330 DISCRIMINATOR AS'3188 D/A DUAL POLARITY | |
| 190750033 | 1 | 330 DISCRIMINATOR CN'1243 D/A STD212 | |
| 190750038 | 1 | 330 DISCRIMINATOR CZ'1248 D/A DUAL POLARITY | |
| 190755027 | 1 | 330 DISCRIMINATOR IS'8236 D/A DUAL POLARITY | |
| 712442003 | 1 | 330 DISCRIMINATOR UA'9582 W/A STD124 | |
| 190742027 | 1 | 350 DISCIMINATOR SW'0372 D/A STD424 | |

Accept Gate Module

| Part Number | Pack Qty | Description | |
|-------------|----------|---------------------------------|--|
| 149836029 | 1 | ACCEPT GATE MODULE 12V ALD, RRD | |
| 149831030 | 1 | ACCEPT GATE MODULE 12V ARD, RLS | |

Exit Plate

| Part Number | Pack Qty | Description | |
|-------------|----------|-----------------------------|--|
| 188622001 | 50 | LEFT HAND EXIT PLATE (GREY) | |

Exit plates are fitted to all CashFlow® discriminators. It is very important to order the correct type of exit plate, otherwise coin jams may occur. Accept Left exit plates are used on discriminators where the accepted coins are routed to the left.

Discriminator Software

| Part Number | Pack Qty | Description | |
|-------------|----------|---------------------------|--|
| 184875105 | 10 | CF3XX MASK SOFTWARE V1.04 | |

Acceptor Interface PCB STD 112

| Part Number | Pack Qty | Description | |
|-------------|----------|-------------------------|--|
| 149823002 | 5 | INTERFACE PCB (STD 112) | |

The Standard 112 interface PCB is intended for use with equivalent 12 volt applications. E.g. MS130, MS130B1 and ME180 products.

Acceptor Interface PCB STD 124

| Part Number | Pack Qty | Description | |
|-------------|----------|-------------------------|--|
| 149821003 | 5 | INTERFACE PCB (STD 124) | |

The Standard 124 interface PCB is intended for use with equivalent 24 volt applications. E.g. MS130, MS130B1 and ME180 products.

Acceptor Interface PCB STD 2/3

| Part Number | Pack Qty | Description | |
|-------------|----------|-------------------------|--|
| 149829004 | 5 | INTERFACE PCB (STD 2/3) | |

The Standard 2/3 interface (12 volt) PCB provides two interfaces on one PCB, Standard 212 and 312. The 212 is equivalent to an NRI G23 and CCL C-120 interface. The 312 is equivalent to an Azkoyen L60.

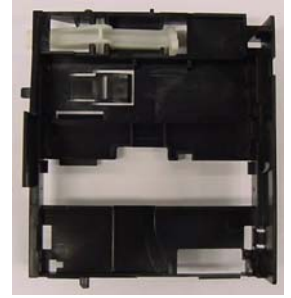
Acceptor Interface PCB DUAL POLARITY



| Part Number | Pack Qty | Description | |
|-------------|----------|-------------------------------|--|
| 149825001 | 5 | INTERFACE PCB (DUAL POLARITY) | |

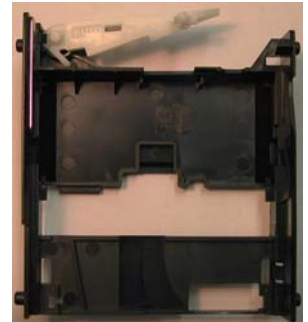
The Dual Polarity interface PCB is a 12 volt interface that is equivalent to the MS111, MS111B1, ME111 and ME115 products.

Front Entry Back Covers



| Part Number | Pack Qty | Description | |
|-------------|----------|------------------------|--|
| 149837010 | 10 | FRONT ENTRY BACK COVER | |

Top Entry Back Covers



| Part Number | Pack Qty | Description | |
|-------------|----------|----------------------|--|
| 149832009 | 10 | TOP ENTRY BACK COVER | |

PCB Back Covers



| Part Number | Pack Qty | Description | |
|-------------|----------|--------------------------|--|
| 149834008 | 10 | INTERFACE PCB BACK COVER | |

The Interface Back Cover provides protection to the interface PCB. Its also polarised to allow for a variation of connectors to be fitted.

Coin Cups

| Part Number | Pack Qty | Description | |
|-------------|----------|-------------------------|--|
| 149840037 | 25 | COIN CUP FRONT - (PK25) | |

Front Plate & Bezel Spares

DCE Bezel (Coin & Token)



| Part Number | Pack Qty | Description |
|-------------|----------|-------------------------------|
| 705543001 | 1 | 5p TO £2 COIN AND TOKEN BEZEL |

DCE Bezel (Coin)



| Part Number | Pack Qty | Description |
|-------------|----------|----------------------|
| 192431002 | 1 | DCE BEZEL 5P TO 2PND |

DCE Bezel (EURO)



| Part Number | Pack Qty | Description |
|-------------|----------|----------------|
| 168368003 | 1 | EURO DCE BEZEL |

DCE Bezel (Universal)



| Part Number | Pack Qty | Description |
|-------------|----------|---------------------|
| 168362001 | 1 | UNIVERSAL DCE BEZEL |

DCE Bezel Plate



| Part Number | Pack Qty | Description |
|-------------|----------|-----------------------|
| 149830049 | 5 | DCE ENTRY GUIDE PLATE |

Front Plate & Bezel Spares

Single Coin Entry Bezel



| Part Number | Pack Qty | Description | |
|-------------|----------|---------------------------------|--|
| 795412002 | 1 | SINGLE COIN ENTRY BEZEL - BLUE | |
| 795410003 | 1 | SINGLE COIN ENTRY BEZEL - CLEAR | |
| 795414001 | 1 | SINGLE COIN ENTRY BEZEL - RED | |

Single Coin Entry Coin Chute



| Part Number | Pack Qty | Description | |
|-------------|----------|------------------------------|--|
| 795427001 | 1 | SINGLE COIN ENTRY COIN CHUTE | |

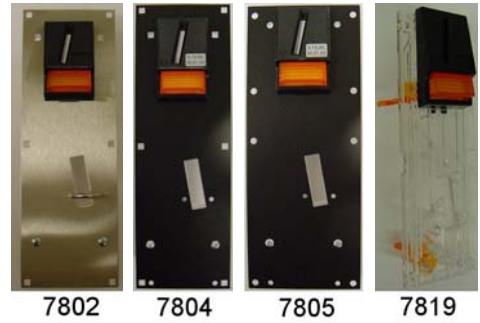
Front Entry Bezel



| Part Number | Pack Qty | Description | |
|-------------|----------|-------------------|--|
| 149838045 | 25 | FRONT ENTRY BEZEL | |

Front Plate & Bezel Spares

Front plates



| Part Number | Pack Qty | Description | |
|-------------|----------|-------------------------|--|
| 7802 | 1 | 7802 FRONT PLATE TYPE C | |
| 7804 | 1 | 7804 FRONT PLATE TYPE A | |
| 7805 | 1 | 7805 FRONT PLATE TYPE B | |
| 7819 | 1 | 7819 BASIC FRONT PLATE | |

Front Plate Mounting Plate



| Part Number | Pack Qty | Description | |
|-------------|----------|----------------|--|
| 149832048 | 25 | MOUNTING PLATE | |

Bezel Clips



| Part Number | Pack Qty | Description | |
|-------------|----------|-------------|--|
| 149831035 | 100 | LOWER CLIP | |
| 149839036 | 100 | UPPER CLIP | |

Bezel Button



| Part Number | Pack Qty | Description | |
|-------------|----------|--------------|--|
| 149832043 | 50 | BEZEL BUTTON | |

Bezel Button Accessory



| Part Number | Pack Qty | Description | |
|-------------|----------|-----------------------|--|
| 149835038 | 50 | WEAR PAD BEZEL BUTTON | |

Front Plates - Mini



| Part Number | Pack Qty | Description | |
|-------------|----------|----------------------------|--|
| 161043001 | 10 | MINI FRONT PLATE - 10 PACK | |

Front Plates - Midi



| Part Number | Pack Qty | Description | |
|-------------|----------|----------------------------|--|
| 705381001 | 1 | MIDI FRONT PLATE | |
| 713112001 | 10 | MIDI FRONT PLATE (BLACK) | |
| 161030001 | 10 | MIDI FRONT PLATE - 10 PACK | |

The Midi front plate measures 155mm x 63mm. It is particularly appropriate for mounting in to machines where space is limited. However, for added security it is advisable to consider fitting a MAXI front plate.

Front Plate & Bezel Spares

Front Plate Labels - Mini/Midi

1c,2c,5c,
10c,20c,50c

| Part Number | Pack Qty | Description | |
|-------------|----------|---------------------------------------|--|
| 728262001 | 50 | FRONT PLATE LABEL 1,2,5,10,20,50,1,2€ | |
| 728260002 | 50 | FRONT PLATE LABEL 1,2,5,10,20,50c | |
| 728268003 | 50 | FRONT PLATE LABEL 5,10,20,50,1,2€ | |

Front Plate Labels - Maxi

1c
2c
5c
10c
20c
50c
1€
2€

| Part Number | Pack Qty | Description | |
|-------------|----------|--|--|
| 728271003 | 50 | MAXI FRONT PLATE LABEL 5,10,20,50,1,2€ | |

Cashflow STS

HII Adaptor & Loom



| Part Number | Pack Qty | Description | |
|-------------|----------|--------------------|--|
| 727410001 | 1 | HII ADAPTOR & LOOM | |

STS Pack - CPM



| Part Number | Pack Qty | Description | |
|-------------|----------|--------------------|--|
| 791494202 | 1 | STS Pack 2 - (CPM) | |

STS CPM Config Pack contains the STS software and a USB loom with an operator license for transferring files to a CPM.

STS Pack - Configuration



| Part Number | Pack Qty | Description | |
|-------------|----------|------------------------------------|--|
| 791496201 | 1 | STS Pack 1 - (Configuration Pack) | |

STS CF7000 Config Pack contains the STS software, USB loom and STI loom with an operator license for configuring CF7000 and transferring files to a CPM.


CF7000 STI Loom





| Part Number | Pack Qty | Description | |
|-------------|----------|---------------------|--|
| 792246001P | 1 | STS CF7000 STI Loom | |


STI loom is for product connection between a CF7000 and STS software only.

WSM Spares

| WSM System | | |  |
|--|----------|------------------------|--|
| Part Number | Pack Qty | Description | |
| 725898301 | 1 | WORKSHOP MODULE SYSTEM | |
| This system comprises the WSM installation CD, Dongle (without credits), HII adaptor & Loom, plus a USB cable. | | | |

| Credit Store | | |  |
|---------------------|----------|-------------------------------|---|
| Part Number | Pack Qty | Description | |
| 740040001 | 1 | CREDIT STORE PLUS 100 CREDITS | |

| HII Adaptor & Loom | | |  |
|-------------------------------|----------|--------------------|---|
| Part Number | Pack Qty | Description | |
| 727410001 | 1 | HII ADAPTOR & LOOM | |

| USB Cable | | |  |
|------------------|----------|----------------------------|---|
| Part Number | Pack Qty | Description | |
| 149881002C | 1 | USB CABLE TYPE A-B 2M LONG | |

WSM Spares

WSM Spare CD



| Part Number | Pack Qty | Description | |
|-------------|----------|--------------------|--|
| 740037001 | 1 | WORKSHOP MODULE CD | |

Service Tools

CPM



| Part Number | Pack Qty | Description |
|-------------|----------|-----------------------------------|
| 725934001 | 1 | CASHFLOW PROGRAMMING MODULE (CPM) |
| 725947001C | 1 | CPM LOOM |

USB Cable



| Part Number | Pack Qty | Description |
|-------------|----------|----------------------------|
| 149881002C | 1 | USB CABLE TYPE A-B 2M LONG |

MDB Host Simulator Box



| Part Number | Pack Qty | Description |
|-------------|----------|-----------------------------|
| 185776001 | 1 | MDB HOST SIMULATOR TEST BOX |

Test Box & Loom Kit (EMTB)



| Part Number | Pack Qty | Description | |
|-------------|----------|------------------------|--|
| 725007001 | 1 | CASHFLOW EMTB TEST BOX | |
| 726702001 | 1 | EMTB ADAPTER LOOM KIT | |

These test boxes are suitable for testing most CashFlow® change giver and acceptor products. The EMTB (Electro-Mechanical) is suitable for most change giver interface types. The MITB (Multi-Interface) can be used for acceptor, totaliser and selector products.

Test Box & Loom Kit (MITB)



| Part Number | Pack Qty | Description | |
|-------------|----------|------------------------|--|
| 725010001 | 1 | CASHFLOW MITB TEST BOX | |
| 725049001 | 1 | MITB ACCEPTOR LOOM KIT | |

CF6xx (Subject To Availability)**Coin Storage Cassettes (Euro)**

| Part Number | Pack Qty | Description | |
|-------------|----------|--------------------------------|--|
| 723127043 | 1 | CF69X EU 1,2,5,20C CASSETTE | |
| 723127004 | 1 | CF69X EU 1,2,50,10C CASSETTE | |
| 723127009 | 1 | CF69X EU 1,5,2,10C CASSETTE | |
| 723122010 | 1 | CF69X EU 1,5,20,10C CASSETTE | |
| 723129003 | 1 | CF69X EU 1,5,50,10C CASSETTE | |
| 723123006 | 1 | CF69X EU 10,10,50,20C CASSETTE | |
| 723120011 | 1 | CF69X EU 10,20,50,1€ CASSETTE | |
| 723121007 | 1 | CF69X EU 5,10,20,10C CASSETTE | |
| 723121002 | 1 | CF69X EU 5,10,50,20C CASSETTE | |
| 723129008 | 1 | CF69X EU 5,5,50,10C CASSETTE | |
| 723129042 | 1 | CF69X EU 50c,1€,2€,2€ CASSETTE | |

Coin Storage Cassettes (UK)



| Part Number | Pack Qty | Description | |
|-------------|----------|-------------------------------|--|
| 723125022 | 1 | CF69X GB 1,2,5,20P CASSETTE | |
| 723121029 | 1 | CF69X GB 1,20,2,10P CASSETTE | |
| 723123028 | 1 | CF69X GB 10,20,50,1£ CASSETTE | |
| 723121024 | 1 | CF69X GB 5,1,2,20P CASSETTE | |
| 723123023 | 1 | CF69X GB 5,10,50,20P CASSETTE | |
| 723125027 | 1 | CF69X GB 5,20,2,1P CASSETTE | |
| 723127026 | 1 | CF69X GB 5,20,20,10P CASSETTE | |
| 723129025 | 1 | CF69X GB 5,20,50,10P CASSETTE | |

Coin Storage Cassette Parts



| Part Number | Pack Qty | Description | |
|-------------|----------|--------------------------------|--|
| 159983001 | 10 | TUBE CASSETTE FRONT (NO TUBES) | |

This part consists of only the Coin Storage Cassette. It does not include the tubes or designators.

Top Prism Housing



| Part Number | Pack Qty | Description | |
|-------------|----------|---------------------|--|
| 159865001 | 200 | PRISM HOUSING SCREW | |

Blue Cassette Clips

| Part Number | Pack Qty | Description | |
|-------------|----------|--------------------------------------|--|
| 159970001 | 100 | TUBE CASSETTE CLIPS (BLUE) - (PK100) | |

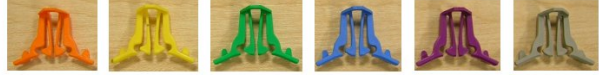
Coin Storage Tubes

| Part Number | Pack Qty | Description | |
|-------------|----------|---------------------|--|
| 169494001P | 5 | No 2.5 TUBE | |
| 159832209 | 5 | No. 0 TUBE MACHINED | |
| 159836202 | 5 | No. 2 TUBE | |
| 159836023 | 5 | No. 2.3 TUBE | |
| 159834203 | 5 | No. 3 TUBE | |
| 159832003 | 5 | No. 3 TUBE MACHINED | |
| 159833011 | 5 | No. 3.5 TUBE | |
| 159832204 | 5 | No. 4 TUBE | |
| 159836001 | 5 | No. 4.5 TUBE | |
| 159830205 | 5 | No. 5 TUBE | |
| 159831012 | 5 | No. 5.5 TUBE | |
| 159838206 | 5 | No. 6 TUBE | |
| 159834002 | 5 | No. 6.5 TUBE | |
| 159836207 | 5 | No. 7 TUBE | |

Coin storage tubes can be fitted to all CF5xx and CF69x changeovers. Each coin tube supports a specific coin diameter. Please refer to the coin/tube data sheet available from MEI.

Coin Storage Labels

| Part Number | Pack Qty | Description | |
|-------------|----------|----------------------------------|--|
| 159894001 | 10 | LIGHT SHIELD LABEL (NOT PRINTED) | |

Designators

| Part Number | Pack Qty | Description | |
|-------------|----------|---------------------------------|--|
| 159845002 | 25 | B' DESIGNATOR (ORANGE) - (PK25) | |
| 159844110 | 25 | C' DESIGNATOR (YELLOW) - (PK25) | |
| 159844115 | 25 | D' DESIGNATOR (GREEN) - (PK25) | |
| 159848113 | 25 | E' DESIGNATOR (BLUE) - (PK25) | |
| 159844211 | 25 | F' DESIGNATOR (VIOLET) - (PK25) | |
| 159842116 | 25 | K' DESIGNATOR (GREY) - (PK25) | |

Colour coded Designators (for easy identification) are available to suit a variety of coin thickness. Please refer to the coin/tube data sheet available from MEI to find out which will suit your coin type.

**Changeiver Discriminators CF69x
(EURO)**



| Part Number | Pack Qty | Description | |
|-------------|----------|-------------------------------------|--|
| 729456005 | 1 | CF690 DISCRIMINATOR DK/EU'1183 D/A | |
| 724608028 | 1 | CF690 DISCRIMINATOR EI/EU D/A | |
| 724608023 | 1 | CF690 DISCRIMINATOR EU/BE'1100 D/A | |
| 725241002 | 1 | CF690 DISCRIMINATOR EU/ES'4097 D/A | |
| 724606024 | 1 | CF690 DISCRIMINATOR EU/NL '7102 D/A | |
| 724606029 | 1 | CF690 DISCRIMINATOR FR/EU D/A | |
| 724601013 | 1 | CF690 DISCRIMINATOR GB/EU'6096 D/A | |
| 724602026 | 1 | CF690 DISCRIMINATOR IT/EU D/A | |
| 724600027 | 1 | CF690 DISCRIMINATOR SF/EU D/A | |
| 724205012 | 1 | CF690 DISCRIMINATOR SW/EU'8176 D/A | |

**Changeiver Discriminators CF69x
(UK)**



| Part Number | Pack Qty | Description | |
|-------------|----------|----------------------------------|--|
| 724606007 | 1 | CF690 DISCRIMINATOR GB '6096 D/A | |

**Change giver Discriminators CF69x
(OTHER)**



| Part Number | Pack Qty | Description |
|-------------|----------|----------------------------------|
| 729454006 | 1 | CF694 DISCRIMINATOR IS'6194 AQUA |

Accept Gate Module



| Part Number | Pack Qty | Description |
|-------------|----------|--|
| 791245001 | 1 | ACCEPT GATE MODULE 12V ARD,RLD CF5XX/69X |

Change giver accept gate modules are supplied without the safety voltage warning label. When ordering a replacement accept gate module you will need to order the appropriate warning label separately.

Accept Gate Module Label



| Part Number | Pack Qty | Description |
|-------------|----------|--|
| 724122002 | 50 | ACCEPT GATE MODULE LABEL (PALM TOP) - (PK50) |

Exit Plate



| Part Number | Pack Qty | Description |
|-------------|----------|-------------------------------|
| 188635001 | 50 | RIGHT HAND EXIT PLATE (BLACK) |

Exit plates are fitted to all CashFlow® discriminators. It is very important to order the correct type of exit plate, otherwise coin jams may occur. Accept Right exit plates are used on discriminators where the accepted coins are routed to the right.

Discriminator Back Cover



| Part Number | Pack Qty | Description | |
|-------------|----------|-----------------------------|--|
| 795870001 | 10 | CHANGER BACK COVER ASSEMBLY | |

This Back Cover Assembly comes fitted with the reject lever and lever spring. The coin entry cup will need to order separately.

Discriminator Coin Entry Cup



| Part Number | Pack Qty | Description | |
|-------------|----------|------------------|--|
| 185530001 | 10 | CHANGER COIN CUP | |

Discriminator Reject Lever



| Part Number | Pack Qty | Description | |
|-------------|----------|----------------------|--|
| 172424001 | 5 | CHANGER REJECT LEVER | |

Discriminator Reject Lever Spring



| Part Number | Pack Qty | Description | |
|-------------|----------|-----------------------------|--|
| 172411001 | 10 | CHANGER REJECT LEVER SPRING | |

Discriminator Hinge Spring



| Part Number | Pack Qty | Description | |
|-------------|----------|----------------------------|--|
| 149835011 | 100 | DISCRIMINATOR HINGE SPRING | |

Separator Module



| Part Number | Pack Qty | Description |
|-------------|----------|----------------------------|
| 149838023 | 1 | CHANGER SEPARATOR ASSEMBLY |

The chagegiver separator assembly comes complete with solenoid, top level sense PCB and loom. This separator assembly can be fitted to both CF5xx and CF69x changeovers. A separator label can be ordered separately.

Separator Casing



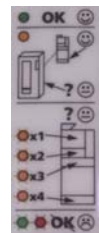
| Part Number | Pack Qty | Description |
|-------------|----------|--------------------------|
| 189076001 | 1 | CHANGER SEPARATOR CASING |

Solenoid Bank



| Part Number | Pack Qty | Description |
|-------------|----------|------------------------------|
| 702273001 | 10 | CHANGER SOLENOID BANK - 10PK |

Separator Module Label



| Part Number | Pack Qty | Description |
|-------------|----------|---|
| 724117003 | 50 | 69X SEPARATOR DIAGNOSTIC LABEL - (PK50) |

Top Level Sensor PCB



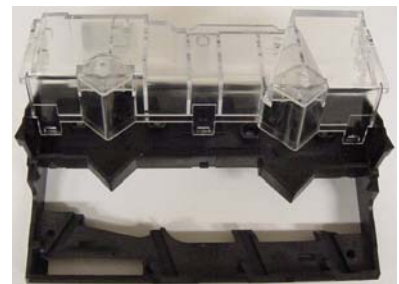
| Part Number | Pack Qty | Description | |
|-------------|----------|-------------------------------|--|
| 160013001 | 1 | SEPARATOR TOP LEVEL SENSE PCB | |

Dispenser Module



| Part Number | Pack Qty | Description | |
|-------------|----------|------------------------------|--|
| 724268001 | 1 | CF5xx / 69x DISPENSER MODULE | |

Dispenser Gear Case & Cover



| Part Number | Pack Qty | Description | |
|-------------|----------|-----------------------------|--|
| 198162001 | 5 | DISPENSER GEAR CASE & COVER | |

Dispenser Base Plate



| Part Number | Pack Qty | Description | |
|-------------|----------|----------------------------------|--|
| 160046004 | 10 | MK2 DISPENSER BASEPLATE - (PK10) | |

Dispenser Arms



| Part Number | Pack Qty | Description | |
|-------------|----------|--|--|
| 159820016 | 25 | DISPENSER DRAG LINK ARM 'A2' - (PK25) | |
| 159824014 | 25 | DISPENSER DRAG LINK ARM 'B4' - (PK25) | |
| 159822015 | 25 | DISPENSER DRAG LINK ARM 'C5' - (PK25) | |
| 159826013 | 25 | DISPENSER DRAG LINK ARM 'D3B' - (PK25) | |
| 159816003 | 25 | MK2 DISPENSER SCAVENGE ARM - (PK25) | |

Dispenser Crank Arm Inserts



| Part Number | Pack Qty | Description | |
|-------------|----------|--------------------------------------|--|
| 185509002 | 20 | DISPENSER CRANK ARM INSERTS - (PK20) | |

Dispenser Module PCB



| Part Number | Pack Qty | Description | |
|-------------|----------|---------------------------|--|
| 724271001 | 1 | CF5xx / 69x DISPENSER PCB | |

Crank Arm



| Part Number | Pack Qty | Description | |
|-------------|----------|------------------------------|--|
| 172391002 | 100 | DISPENSER CRANK ARM + MAGNET | |

CF6xx (Subject To Availability)

Dispenser Motor



| Part Number | Pack Qty | Description | |
|-------------|----------|-----------------------------|--|
| 172392010 | 20 | DISPENSER MOTOR + WORM GEAR | |

Dispenser Module (Other Parts)



| Part Number | Pack Qty | Description | |
|-------------|----------|-----------------------|--|
| 172399008 | 100 | DISPENSER CLUTCH PIN | |
| 172399003 | 100 | DISPENSER DRIVE SHAFT | |
| 172395005 | 100 | DISPENSER IDLER GEAR | |
| 172397004 | 100 | DISPENSER OUTPUT GEAR | |

CF69x Control Boards



| Part Number | Pack Qty | Description | |
|-------------|----------|---|--|
| 724239001 | 1 | CF690 MDB/BDV/EXEC CONTROL BOARD (FLUORAD) | |
| 724226001 | 1 | CF690 MDB/BDV/EXECUTIVE CONTROL BOARD | |
| 724255001 | 1 | CF690 PLUS MDB/BDV/EXEC CONTROL BOARD (FLUORAD) | |
| 724242001 | 1 | CF690 PLUS MDB/BDV/EXECUTIVE CONTROL BOARD | |

Transformers

| Part Number | Pack Qty | Description | |
|-------------|----------|----------------------------|--|
| 159850220 | 1 | 187-242 VOLT TRANSFORMER | |
| 159850024 | 1 | 20.4-26.4 VOLT TRANSFORMER | |
| 159852006 | 1 | 212-264 VOLT TRANSFORMER | |
| 159850100 | 1 | 85-121 VOLT TRANSFORMER | |
| 159854120 | 1 | 95-132 VOLT TRANSFORMER | |

Change giver Keypad Spares

| Part Number | Pack Qty | Description | |
|-------------|----------|------------------------|--|
| 724166001 | 1 | CF69X KEYPAD & DISPLAY | |
| 724140001 | 5 | CF69X KEYPAD LCD LOOM | |
| 724153001 | 5 | CF69X KEYPAD LCD PCB | |

Change giver Spine

| Part Number | Pack Qty | Description | |
|-------------|----------|---------------|--|
| 182951001 | 5 | CHANGER SPINE | |

Control Board Back Cover



| Part Number | Pack Qty | Description | |
|-------------|----------|--|--|
| 796384001 | 5 | CHANGER CONTROL BOARD BACK COVER - (PK5) | |

Cash Box Route Cover



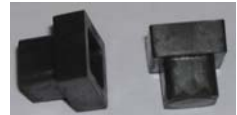
| Part Number | Pack Qty | Description | |
|-------------|----------|---------------------------------------|--|
| 796371001 | 50 | CHANGER CASH BOX ROUTE COVER - (PK50) | |

Acceptor Retaining Clip



| Part Number | Pack Qty | Description | |
|-------------|----------|------------------------|--|
| 160144001 | 20 | CHANGER RETAINING CLIP | |

Blank Grommet (Small)



| Part Number | Pack Qty | Description | |
|-------------|----------|------------------------------------|--|
| 160291001 | 100 | CHANGEGIVER BLANK GROMMETS (SMALL) | |

Blank Grommet (Large)



| Part Number | Pack Qty | Description | |
|-------------|----------|--------------------------------|--|
| 724179001P | 50 | CHANGER BLANK GROMMETS (LARGE) | |

Mounting Plate



| Part Number | Pack Qty | Description | |
|-------------|----------|------------------------|--|
| 160131001 | 20 | CHANGER MOUNTING PLATE | |

This mounting plate is fitted at the top of the changeover spine to form the top two fixing points for the changeover to the machine.

Acceptor/Control Board Loom



| Part Number | Pack Qty | Description | |
|-------------|----------|--------------------------------------|--|
| 724108001 | 10 | CF69X ACCEPTOR TO CONTROL BOARD LOOM | |

Credit Display



| Part Number | Pack Qty | Description | |
|-------------|----------|-------------------------------|--|
| 7211 | 1 | 4-DIGIT' DISPLAY PLUS BRACKET | |

External Display Looms



| Part Number | Pack Qty | Description | |
|-------------|----------|-----------------------|--|
| 104920001 | 1 | 4-DIGIT' DISPLAY LOOM | |

Machine Interface Looms CF6xx (Subject to Availability)

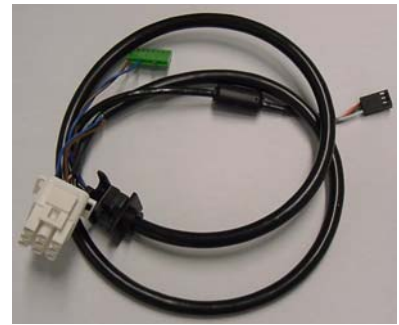
Machine Interface Loom T1 (Executive)



| Part Number | Pack Qty | Description |
|-------------|----------|----------------------|
| 135909001C | 1 | MACHINE LOOM T1 EXEC |

The T1 Executive power loom connects to various serial interface (protocol A) machines fitted with a 15-way Molex connector. As this loom only provides power to the changeover, a protocol 'A' loom will also be required. See also T10 (Exec+) Loom.

Machine Interface Loom T2 (BDV)



| Part Number | Pack Qty | Description |
|-------------|----------|---------------------|
| 135894001C | 1 | MACHINE LOOM T2 BDV |

The T2 (BDV) machine interface loom is for connection to a serial BDV machine fitted with a 9-way Amp Mate 'n' Lock connector.

Machine Interface Loom T3 (1 Price)



| Part Number | Pack Qty | Description |
|-------------|----------|------------------------|
| 135976003C | 1 | MACHINE LOOM T3 1PRICE |

The T3 (1 Price) machine interface loom is for connection to various Electro-mechanical machines fitted with an 8-way Jones plug connector.

Machine Interface Loom T4 (4 Price)



| Part Number | Pack Qty | Description |
|-------------|----------|------------------------|
| 135974004C | 1 | MACHINE LOOM T4 4PRICE |

The T4 (4 Price) machine interface loom is for connection to various Electro-mechanical machines fitted with an 8-way Jones plug connector.

Machine Interface Loom T5 (4 Price)



| Part Number | Pack Qty | Description |
|-------------|----------|------------------------|
| 135972005C | 1 | MACHINE LOOM T5 4PRICE |

The T5 (4 Price) machine interface loom is for connection to various Electro-mechanical machines fitted with an 15-way Molex plug connector.

Machine Interface Loom T6 (3 Price)



| Part Number | Pack Qty | Description |
|-------------|----------|------------------------|
| 135970006 | 1 | MACHINE LOOM T6 3PRICE |

The T6 (3 Price) machine interface loom is for connection to various Electro-mechanical machines fitted with an 8-way Jones plug connector.

Machine Interface Looms CF6xx (Subject to Availability)

**Machine Interface Loom T10
(Executive+)**



| Part Number | Pack Qty | Description |
|-------------|----------|----------------------------|
| 717819010C | 1 | MACHINE LOOM T10 EXEC PLUS |

The T10 (Exec+) machine interface loom is for connection to various Serial interface (Protocol A) machines where the Exact Change light is controlled by the changegiver. It's supplied with a 15-way Molex connector. See also T1 Executive loom.

Machine Interface Loom T11 (4 Price)



| Part Number | Pack Qty | Description |
|-------------|----------|---------------------------------|
| 135967001 | 1 | MACHINE LOOM T11 4PRICE C/RELAY |

The T11 (4 Price) machine interface loom is for connection to various Electro-mechanical machines with a built in credit relay. It's fitted with a 15-way Molex plug and a 4-way Molex connector.

Machine Interface Loom T13 (4 Price)



| Part Number | Pack Qty | Description |
|-------------|----------|-------------------------|
| 135973013 | 1 | MACHINE LOOM T13 4PRICE |

The T13 (4 Price) machine interface loom is for connection to various Electro-mechanical machines fitted with a 12-way Mate 'n' Lock connector.

Machine Interface Looms CF6xx (Subject to Availability)

Machine Interface Loom T14 (4 Price)



| Part Number | Pack Qty | Description |
|-------------|----------|-------------------------|
| 135971014 | 1 | MACHINE LOOM T14 4PRICE |

The T14 (4 Price) machine interface loom is for connection to various Electro-mechanical machines fitted with a 12-way Mate 'n' Lock connector.

CF5xx & CF69x MDB Machine Loom



| Part Number | Pack Qty | Description |
|-------------|----------|--------------------------------|
| 188737001P | 1 | CF5XX & CF69X MDB MACHINE LOOM |

This MDB (Multi-interface) loom is one of the two optional interfaces offered with Multi-interface products. The other is a 4/1 price Electro-mechanical interface.

CF690 MDB Peripheral Loom



| Part Number | Pack Qty | Description |
|-------------|----------|---------------------------|
| 712593001C | 1 | CF690 MDB PERIPHERAL LOOM |

CF691-CF695 Machine Interface Loom (MDB EXT/PSU)



| Part Number | Pack Qty | Description |
|-------------|----------|--|
| 712580001C | 1 | CF691 - CF695 MACHINE LOOM MDB EXT/PSU |

Machine Interface Looms CF6xx (Subject to Availability)

CF69x Machine Interface Loom (Protol 'A')



| Part Number | Pack Qty | Description | |
|-------------|----------|---|--|
| 104997003C | 1 | CF690 MACHINE LOOM PROTOCOL 'A' PLUS FERITE | |

This is the Protocol 'A' loom used for all Executive serial interface machines. It controls the serial communication between the change giver and the vending machine. It's normally used together with either a T1 or T10 interface loom.

CF6xx Audit Looms (Subject To Availability)

Audit Connectokit Loom



| Part Number | Pack Qty | Description |
|-------------|----------|-------------------------|
| 148042002C | 1 | AUDIT CONNECTOKIT LOOMS |

Mars® Audit 900 Connectokit loom can also be purchase as a spare. It's fitted with a robust connector suitable for connection to a Mars® MEQ hand-held terminal.

Audit Optokit Loom



| Part Number | Pack Qty | Description |
|-------------|----------|---------------------|
| 148044001 | 1 | AUDIT OPTOKIT LOOMS |

Mars® Audit 900 Optokit loom can also be purchase as a spare. It's suitable for connecting the CashFlow® change giver to the Mars® audit 900 Optics module.

Audit Printokit Loom



| Part Number | Pack Qty | Description |
|-------------|----------|----------------------|
| 148040003C | 1 | AUDIT PRINTOKIT LOOM |

Mars® Audit 900 Printokit loom can also be purchase as a spare. It's fitted with a 15-way D type connector suitable for connection to a Mars® audit 920 printer.

CF6xx Audit Looms (Subject To Availability)

CF69x IrDA Audit Loom



| Part Number | Pack Qty | Description | |
|-------------|----------|-----------------------|--|
| 217496001 | 1 | CF690 IrDA Audit Loom | |

FIRDA MODULE 15W KIT



| Part Number | Pack Qty | Description | |
|-------------|----------|----------------------|--|
| 217789001 | 1 | FIRDA MODULE 15W KIT | |