

Bianchi Vending Group - Spare Parts
Catalog:

 **SPI07NB - SPRINT A/R I5S BLACK STD**

Summary

SPI07NB - SPRINT A/R I55 BLACK STD	1
SPI07NB - SPRINT A/R I55 BLACK STD INSTANT ASSEMBLY	2
COMPONENTS FOR MIXERS AND VACUUM CLEANERS (584)	3
ASSEMBLY GROUP BOILER INSTANT PRODUCTS WITH DRAFTING ENGINE (278)	5
CANISTER DOSER (491)	7
MIXER AND HEATED BOWL (248)	9
GEARMOTORS FOR POWDER CANISTERS (212)	11
SPI07NB - SPRINT A/R I55 BLACK STD DOOR	13
FRONT DOOR(276)	14
INNER DOOR(263)	16
KEYBOARD - DISPLAY(271)	18
DOOR LOCK(273)	20
SPI07NB - SPRINT A/R I55 BLACK STD CABINET	22
CABINET (275)	23
BASE CABINET(268)	25
DISCHARGE AND FUNDRAISING (272)	27
SPI07NB - SPRINT A/R I55 BLACK STD PRODUCT DELIVERY	29
NOZZLES AND DISPENSER BREWING (274)	30
SPI07NB - SPRINT A/R I55 BLACK STD ELECTRIC & ELECTRONICS	32
POWER CONVERTER AND COMPONENTS FOR MAINS SUPPLY (279)	33
ELECTRONIC BOARD CPU MASTER - POWER AND CONNECTIONS (277)	35
KEYBOARD BOARD (260)	37
ELECTRONIC BOARD - KIT EXECUTIVE(245)	39
ELECTRONIC BOARD - KIT MDB - EXECUTIVE - KEY(246)	41
SPI07NB - SPRINT A/R I55 BLACK STD HYDRAULIC COMPONENTS	43
AUTONOMOUS TANK KIT WITH IMMERSION PUMP	44
EOLO AND HYDRO PIPES AVAILABLE (68)	46

Group charts

 **SPI07NB - SPRINT A/R I5S BLACK STD**

Group charts

 **SPI07NB - SPRINT A/R I5S BLACK STD**
 **INSTANT ASSEMBLY**

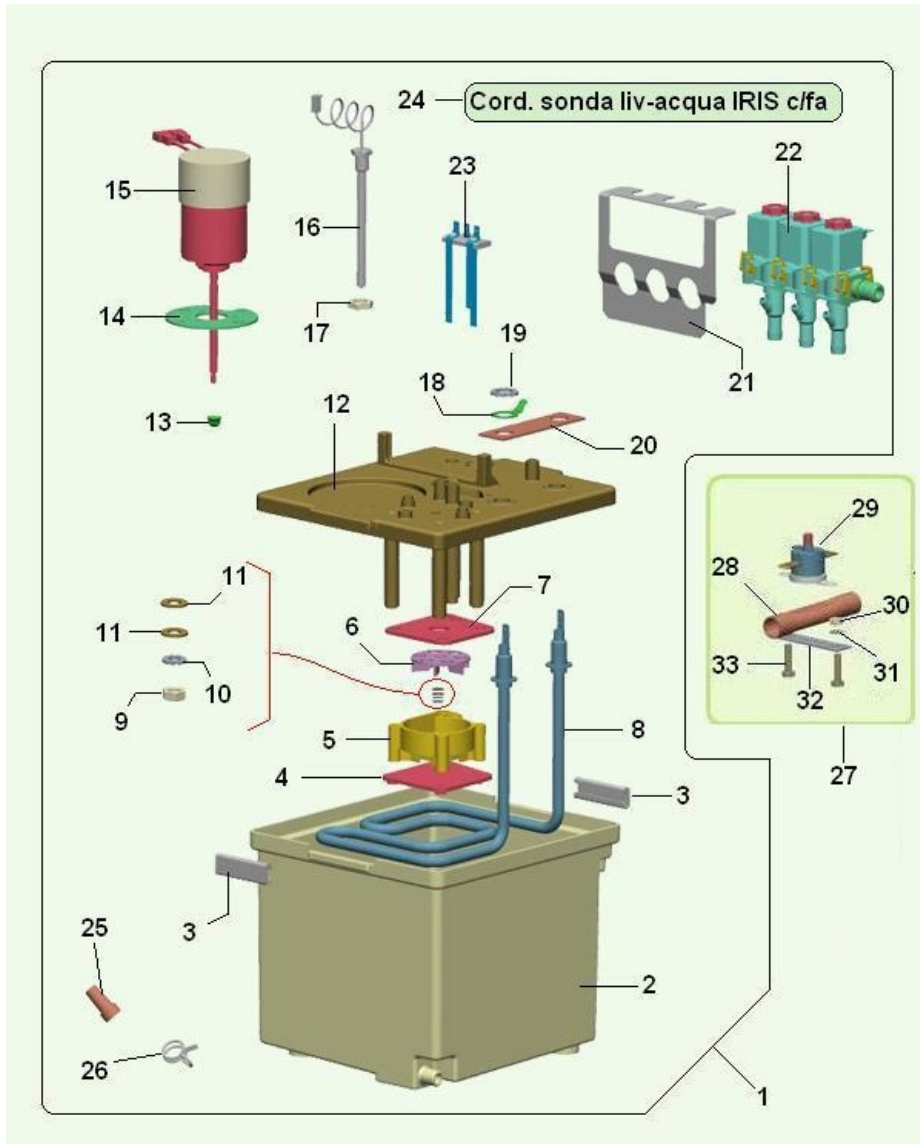
COMPONENTS FOR MIXERS AND VACUUM CLEANERS (584)



COMPONENTS FOR MIXERS AND VACUUM CLEANERS (584) - Item detail:

Position	Code	Options	Description
1	05145615-01M37		BROWN SUCTION BOX
2	05071935		aspiration pipe connection blue
3	33050126		3.2x8 rivetODE
4	20020016		24VDC mixermotor screwed shaft
5	05154015		mixer protection disky grate(graph.)
6	05132525		brown r. holder connec.for 3,5pipe
7	05133242		brown mixer flange with washerpipe
8	32224356		3.9x22 self-tapping screw
9	05111825		mixer impellert.frame silver
10	05111625		brown mixing chambert.frame silver
11	36210916		OR2021 gasketODE
12	36210716		OR 3131 gasketODE
13	36351215		green V-seal gasketODE
14	05102225		brown mixing chambersy
16	36203816		OR 106 6,75/1,78 gasketODE
17	05113745M57		mixing bowl L=10 black am
18	05145925		sprint brown mixing bowlcollar

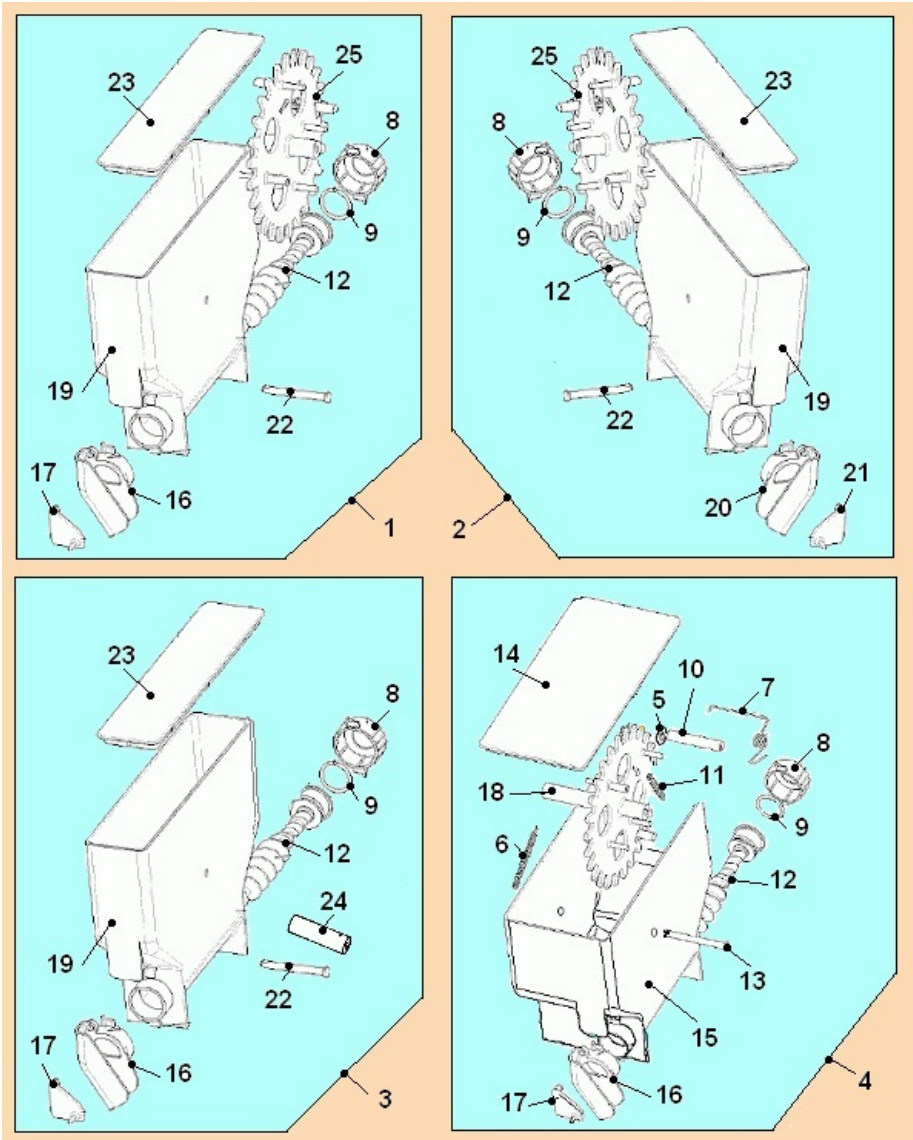
ASSEMBLY GROUP BOILER INSTANT PRODUCTS WITH DRAFTING ENGINE (278)



ASSEMBLY GROUP BOILER INSTANT PRODUCTS WITH DRAFTING ENGINE (278) - Item detail:

Position	Code	Options	Description
1	87008510-04		Sprint instant boiler assy pls
2	05141015-02		boiler tank
3	05141515		boiler lockump
4	05140915		lower pump plateump
5	05140615		pump case for polisul.boilerarea
6	05140715		impeller for plastic boilerump
7	05140815		upper pump plateump
8	29004611-01		electric heating element 2000w120V
9	34102836		4MA nut hexagonal
10	35160326		tooth washer D. 4,2IX
11	35155236		level ground washer Ø 4.3 IX
12	05141115-04		boiler cover
13	36300526-01		wiring sil. gasket (green)ODE
14	01609521		motor plate PLS boilerphite
15	20020116		12V DC motord shaft
16	26060216		temperature sensor
17	34103236		HEX. NUT 10MA UNI5589 INOX
18	01194711		Faston connection 13,5
19	35160826		Inox toothed washer d=12,4
20	08012811		insulation for pls boiler heat.element
21	01634411		Sprint electrovalves supportlink
22	25021216		24VDC group of 3 EV PLS boilerC(1200cc)
23	01962510		water level sensor assembly
24	22127822		water level sensor cable IRIS
25	05036515		drain tube plugipe 8
26	21000526		CLAMP D.12,3
27	25019620		clixon tube assy - 75°
28	09078221-01		CLIXON PIPE
29	25014936-01		clixon75°Crubber holder
30	34102716		M3 hexagonal nut
31	35160216		self-locking diam.3.2
32	01213411		clixon plate
33	32025716		3MA x 16 TC screw

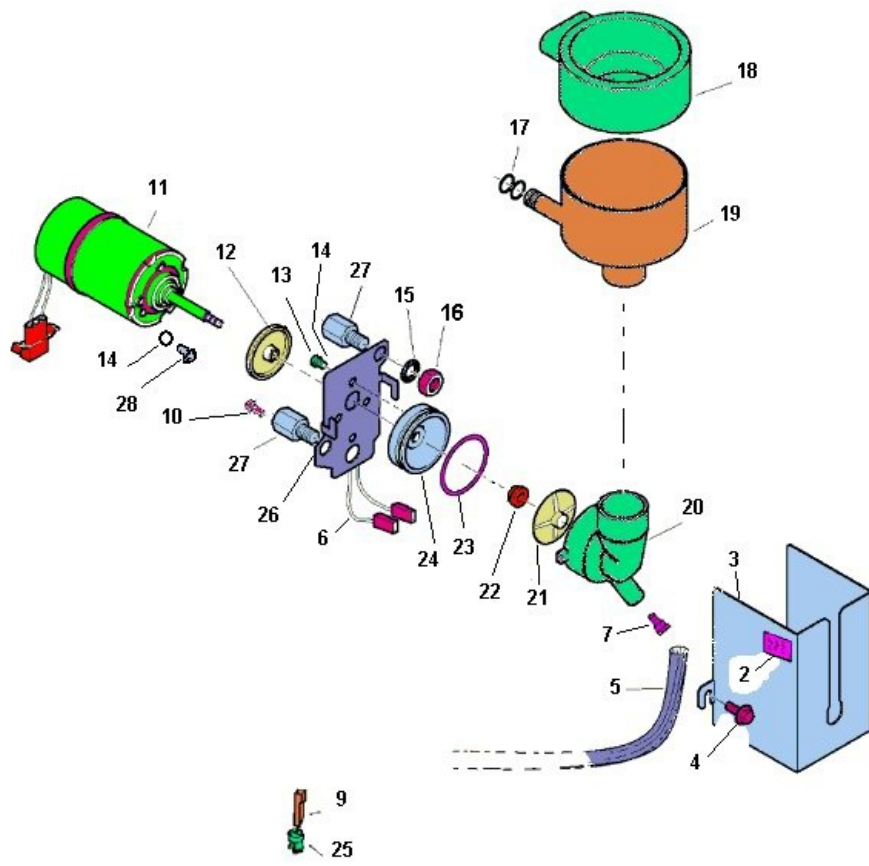
CANISTER DOSER (491)



CANISTER DOSER (491) - Item detail:

Position	Code	Options	Description
1	96049210-01		rh single canister assy 1 wheel sprint
2	96049310-01		lft sing canister assy w/wheel sprint
3	96049320		lft sing canist sugar Sprintl sprint
4	96049010-01		rh double canister assy sprintsy
5	35155526		plane washerODE
6	07020211-01		canister agitator spring-971
7	07021411		canister(double wheel) agitator spring
8	05142815		lock for disp.canist.auger sprint
9	36212616-01		o-ring 3093 23 47X2 62ODE
10	05147415		Double canister spacertray grate
12	05143415		extracting auger for canisterint
13	05143725		pin for double prod.canister Sprint
14	05142615		right double canister cover sprint
15	05142415		right double canister sprintump
16	05142915-01		right slide
17	05143015		right slide capint
18	05142725-01		Cog-wheel for double dispenser canister
19	05142315		Left canister sprintump
20	05142925-01		left slide
21	05143025		left slide capint
22	05143715		pin for product canister Sprint
23	05142515		Left canister cover sprintump
24	05154315		sugarcanister spacery grate(graph.)
25	05142715-01		wheel for single prod.canister

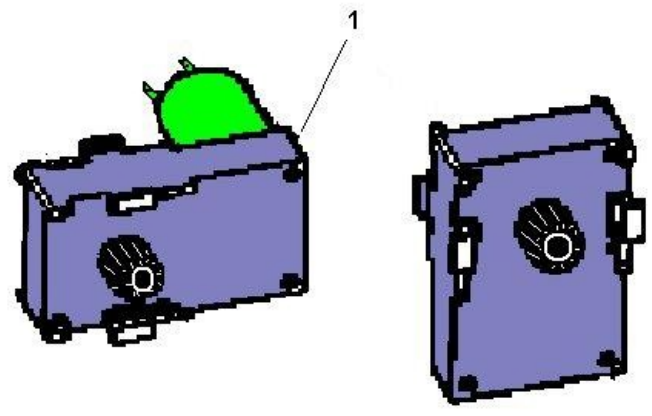
MIXER AND HEATED BOWL (248)



MIXER AND HEATED BOWL (248) - Item detail:

Position	Code	Options	Description
2	30069411-01		temperat.safety sticker
3	01601111-03		heating chamber coversy
4	32227256		3.9x9.5 self-tapping screw9,5
5	09087823		grey silicon pipe 5x9581
5	09087823-02		brown sez silicon pipe 5x9
6	29004216		20W 24V heating element(heat.mixer)
7	05102215		reductionsy
9	05099715-01		white L=48 nozzleesy
10	32050516		screw 4 Mx10
11	20020016		24VDC mixermotor screwed shaft
12	05154015		mixer protection disk grate(graph.)
13	32060416		4Mx8 screw
14	35160316		d. 4,2 IX self locking washer
15	35160616		Ø 8.3 self-locking washerODE
16	34103116		8MA hex nutODE
17	36203816		OR 106 6,75/1,78 gasketODE
18	05113815M57		black AM mixing bowl cover
19	05113745M57		mixing bowl L=10 black am
20	05137615		verton mixer chamberle
21	05111825		mixer impellert.frame silver
22	36351215		green V-seal gasketODE
23	36212516		O-Ring 29,74x2,95 vitonODE
24	19033441		mixer basegroup
25	05099615		nozzle bushsy
26	01123821		61,5 step bowl support
27	19056531-01		Spacer nut L=26,5Aristos
28	32050416		M4x8 screw

GEARMOTORS FOR POWDER CANISTERS (212)



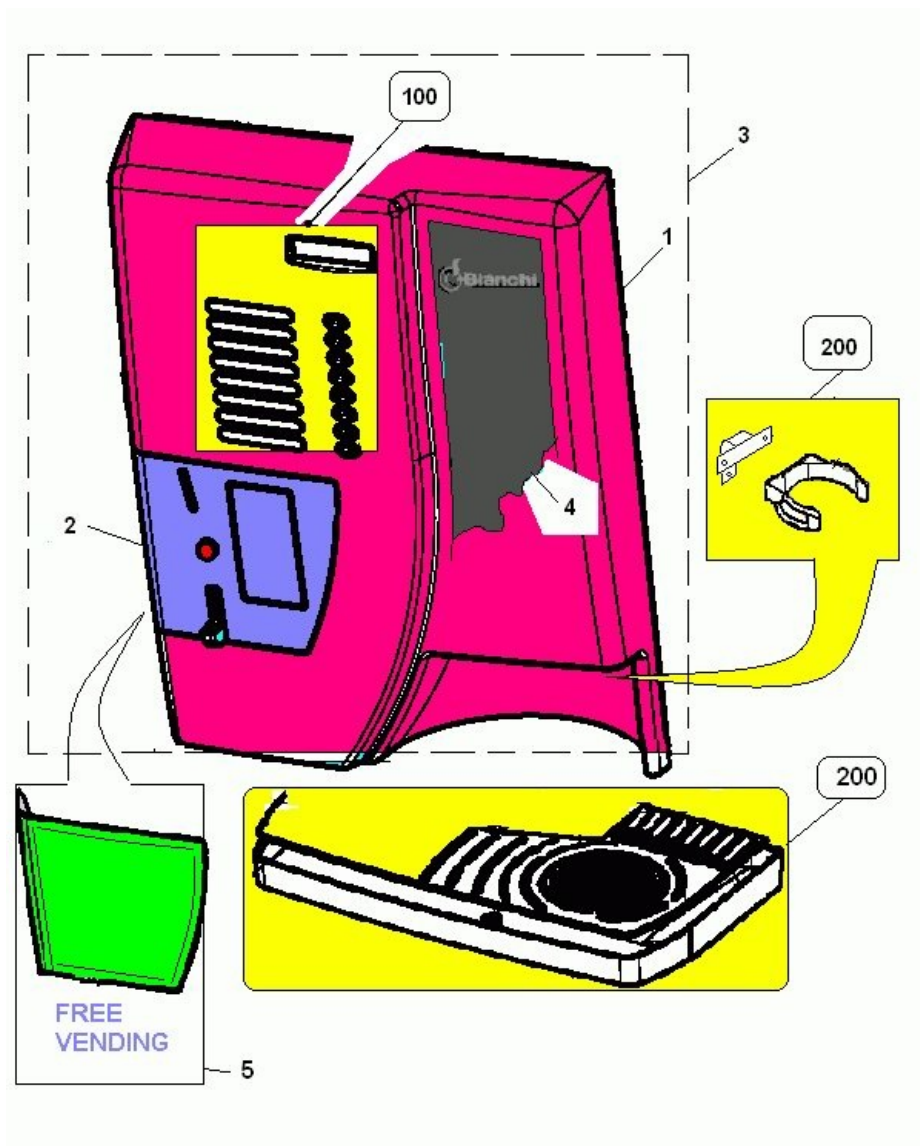
GEARMOTORS FOR POWDER CANISTERS (212) - Item detail:

Position	Code	Options	Description
1	20020316		24V DC motor quick connect.d shaft

Group charts

 **SPI07NB - SPRINT A/R I5S BLACK STD**
 **DOOR**

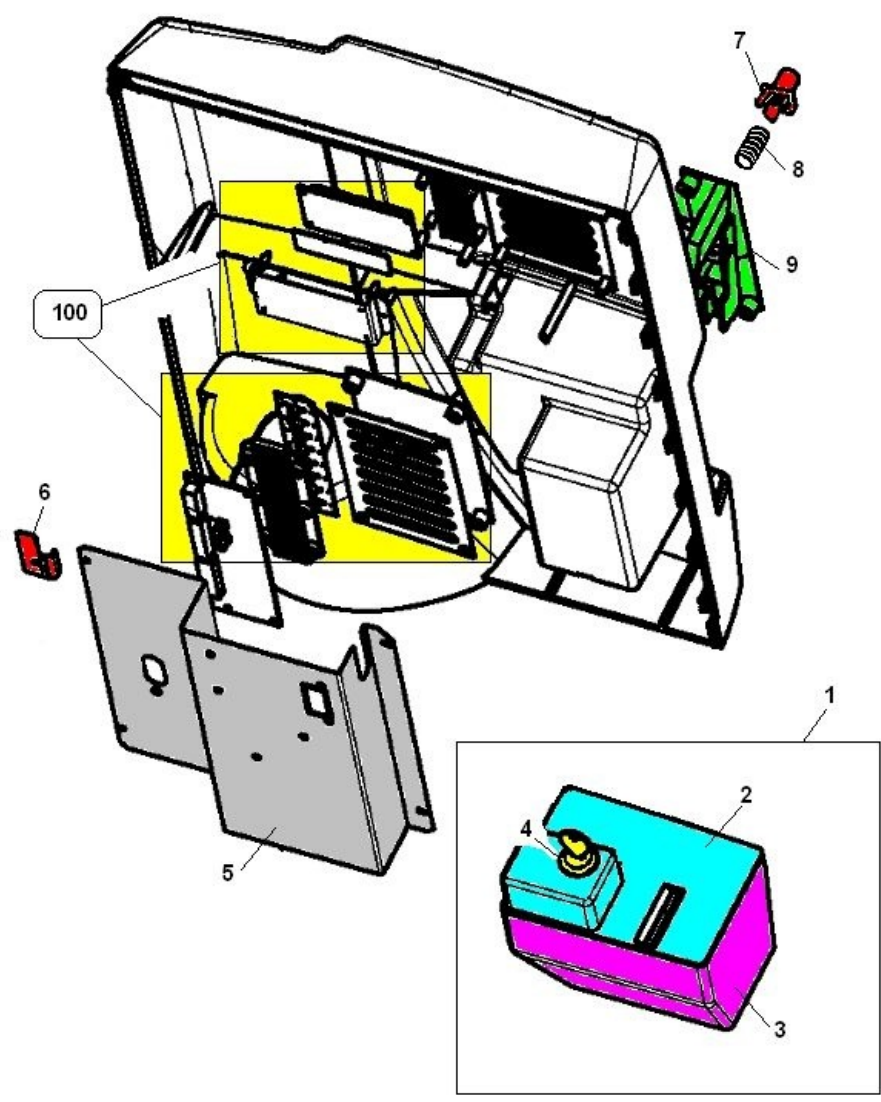
FRONT DOOR(276)



FRONT DOOR(276) - Item detail:

Position	Code	Options	Description
1	05144125L09		Sprint plastic door black
2	05144335		validator panel sprint blackprint
3	98069020		complete Sprint black door
4	30085531		Claudia's label for SPRINTdoor
5	05144225L09		freevend panel sprint black
100	289		KEYBOARD - DISPLAY(271)
200	153		NOZZLES AND DISPENSER BREWING (274)

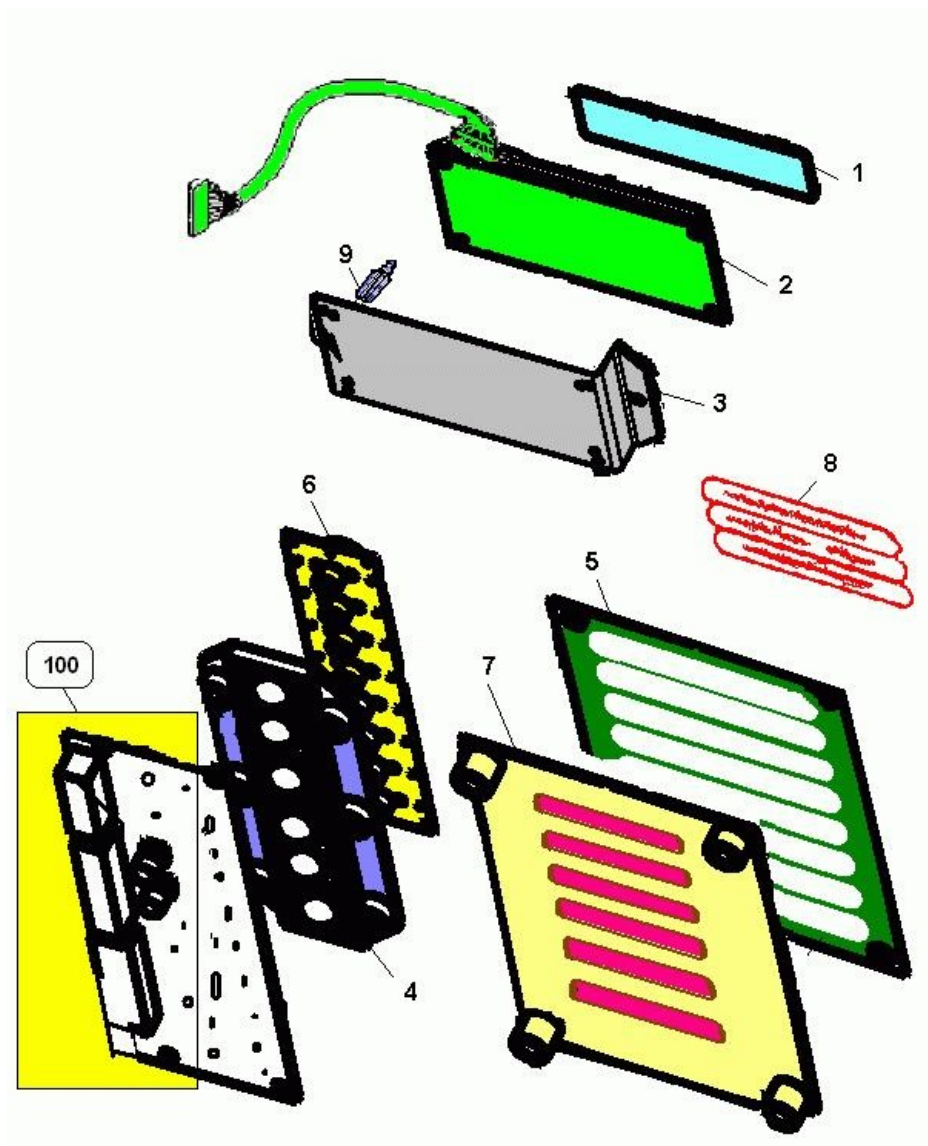
INNER DOOR(263)



INNER DOOR(263) - Item detail:

Position	Code	Options	Description
1	05144610		sprint coin box assyiris
2	05144815		sprint coin box coveriris
3	05144715		sprint coin boxiris
4	21015326		sprint lock for coin boxpump
5	01637612-03		Sprint lamp cover
6	01634811-01		Iris/Sprint door lock platelink
7	05145235M15		grey button for Sprint
8	00020973		spring button
9	05144415M09		coin validator sup sprint/iris
100	289		KEYBOARD - DISPLAY(271)

KEYBOARD - DISPLAY(271)



KEYBOARD - DISPLAY(271) - Item detail:

Position	Code	Options	Description
1	05150315		display cover850
2	26027122-01		display 2x16 w/c white
3	01632111		Sprint display supportanta.graph.
5	05144915		label housing sprintiris
6	05145135M15		grey rubber keypad sprint
7	05145015		labels closing panel sprintiris
8	30085641		sprint sticker
9	33065926		display spacerODE
100	328		KEYBOARD BOARD (260)

DOOR LOCK(273)



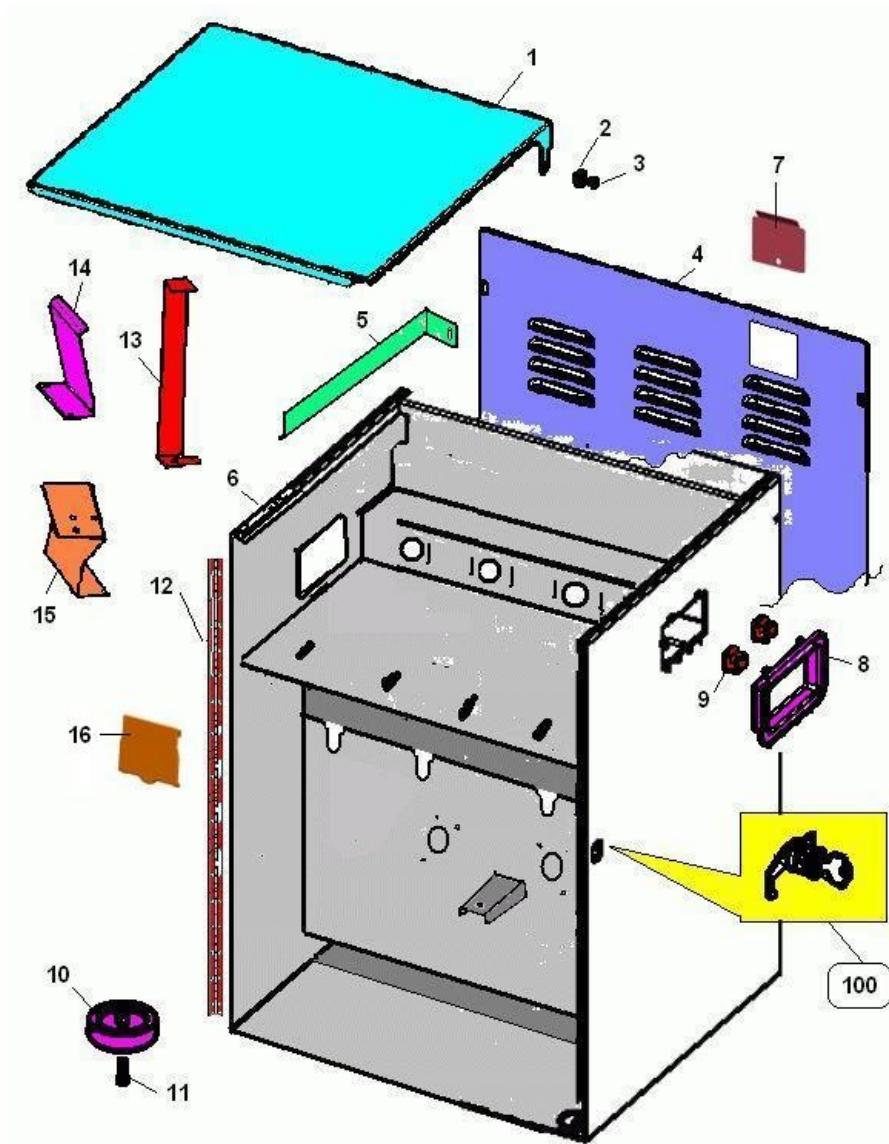
DOOR LOCK(273) - Item detail:

Position	Code	Options	Description
1	21015336		lock for Sprint/Iris (eurolock)
2	01637411		lock leverhite
3	21015316		sprint door lockpump
4	01636211		Sprint door lock leverhite

Group charts

 **SPI07NB - SPRINT A/R I5S BLACK STD**
 **CABINET**

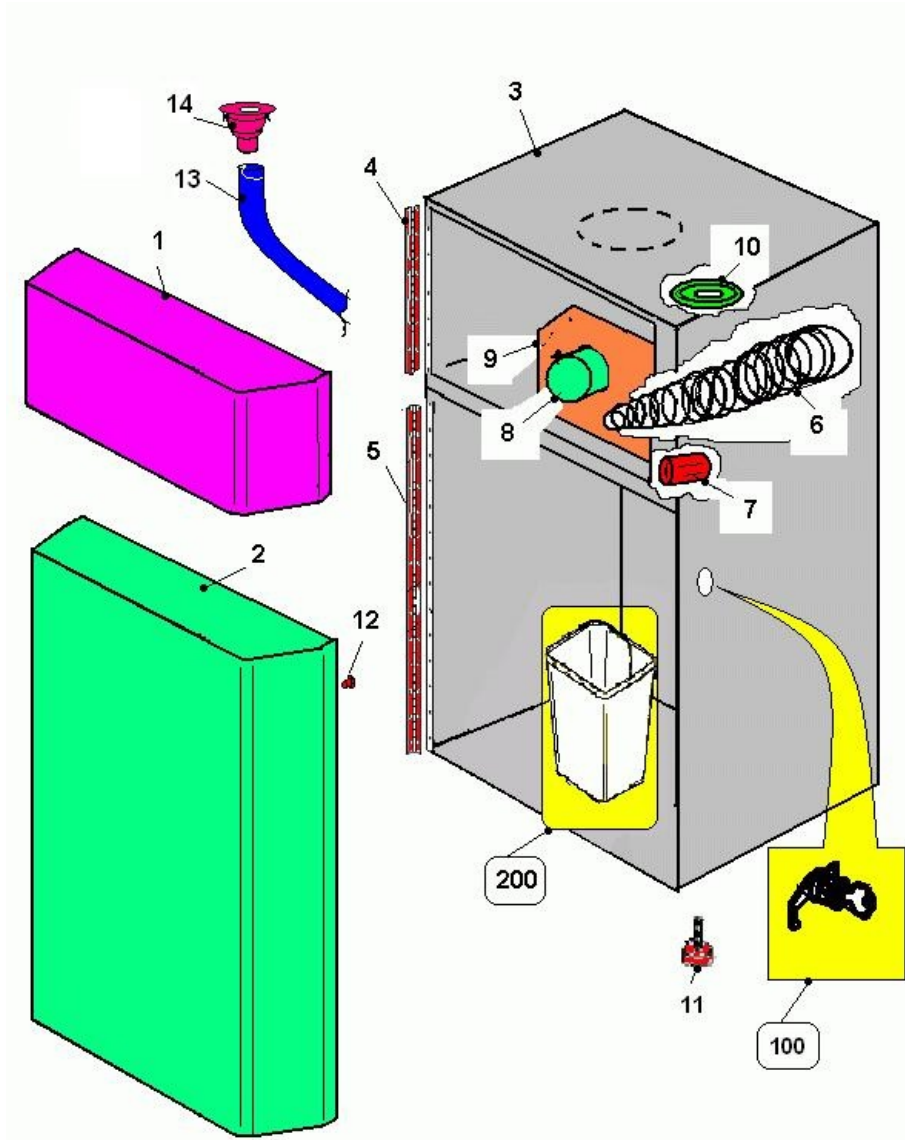
CABINET (275)



CABINET (275) - Item detail:

Position	Code	Options	Description
1	01640612-02L09		Black Sprint waterproof roof
2	19054411		rivet bushgroup
3	33050126		3.2x8 rivetODE
4	01705111-01		Sprint cabinet back panel
6	01627712-08L09		INSTANT SPRINT CABINET ASSY
7	01842611		cabinet backrest plug
8	05145715		sprint handlel.tray grate
9	05154515		fixing hanger for iris handley grate(graph.)
10	05146025M09		black sprint/iris footl.tray grate
11	05146225M09		pin for black foot SPRINT/IRIS
12	21013721		sprint door hinge)plsCAM
13	01639612-01		Plastic boiler with insert blocking stirrup
14	01632511		PLS Boiler fixing plateantar.graph.
15	01632521-01		Plastic boiler fixing stirrup
16	05155715-01M09		plug for motor service opening
100	343		DOOR LOCK(273)

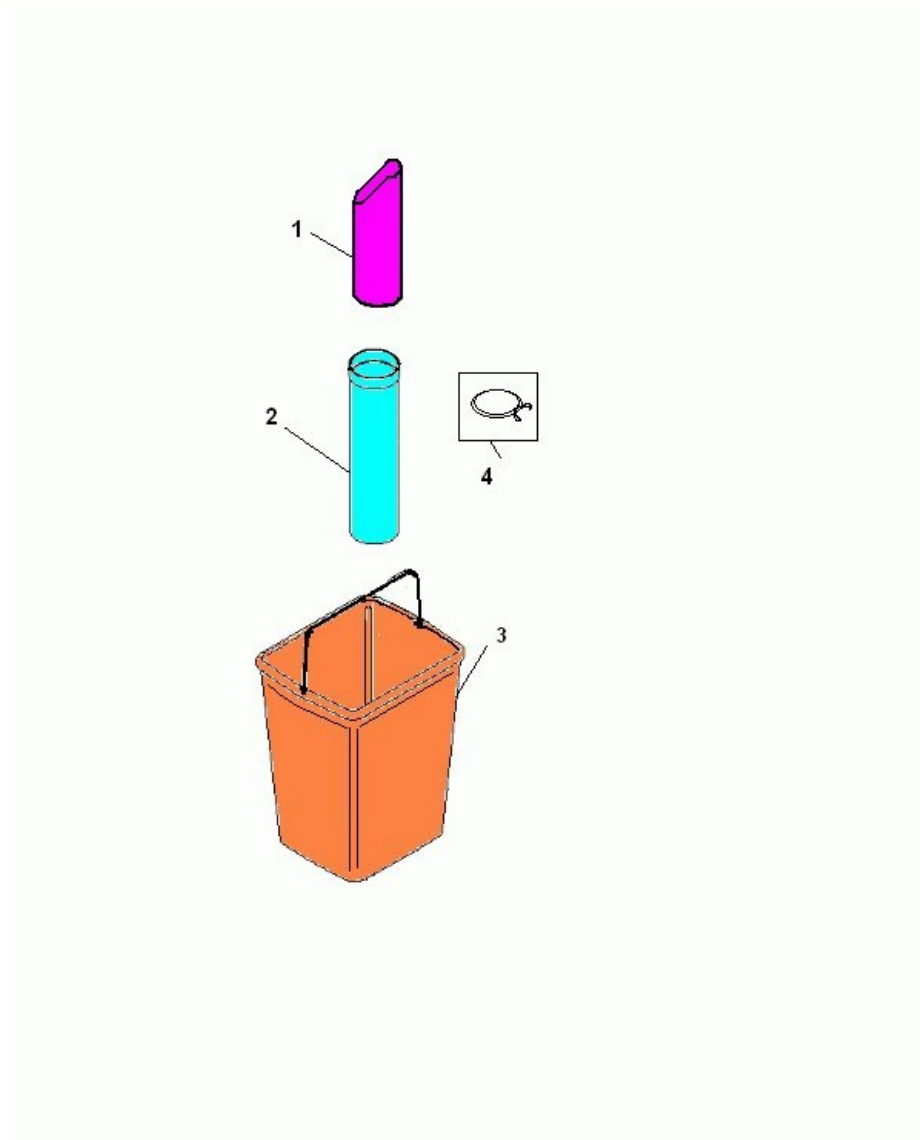
BASE CABINET(268)



BASE CABINET(268) - Item detail:

Position	Code	Options	Description
2	01653512L09		Black cabinet door assy
4	21013541		cup container hinge)plsCAM
5	21013551		Cabinet door hinge
6	07022111		cup pipe springr spring
7	20022316		Cup container door round magnet
8	09094821		pipe
9	01653411		pipe support
10	23004096		cable damper(35*7 - rubber)
11	21006216		foot)plsCAM
12	00104883		rubber buffer
13	09027623		12x16 L=700 PVC pipe581
14	05024515		bushipe 8
100	343		DOOR LOCK(273)
200	181		DISCHARGE AND FUNDRAISING (272)

DISCHARGE AND FUNDRAISING (272)



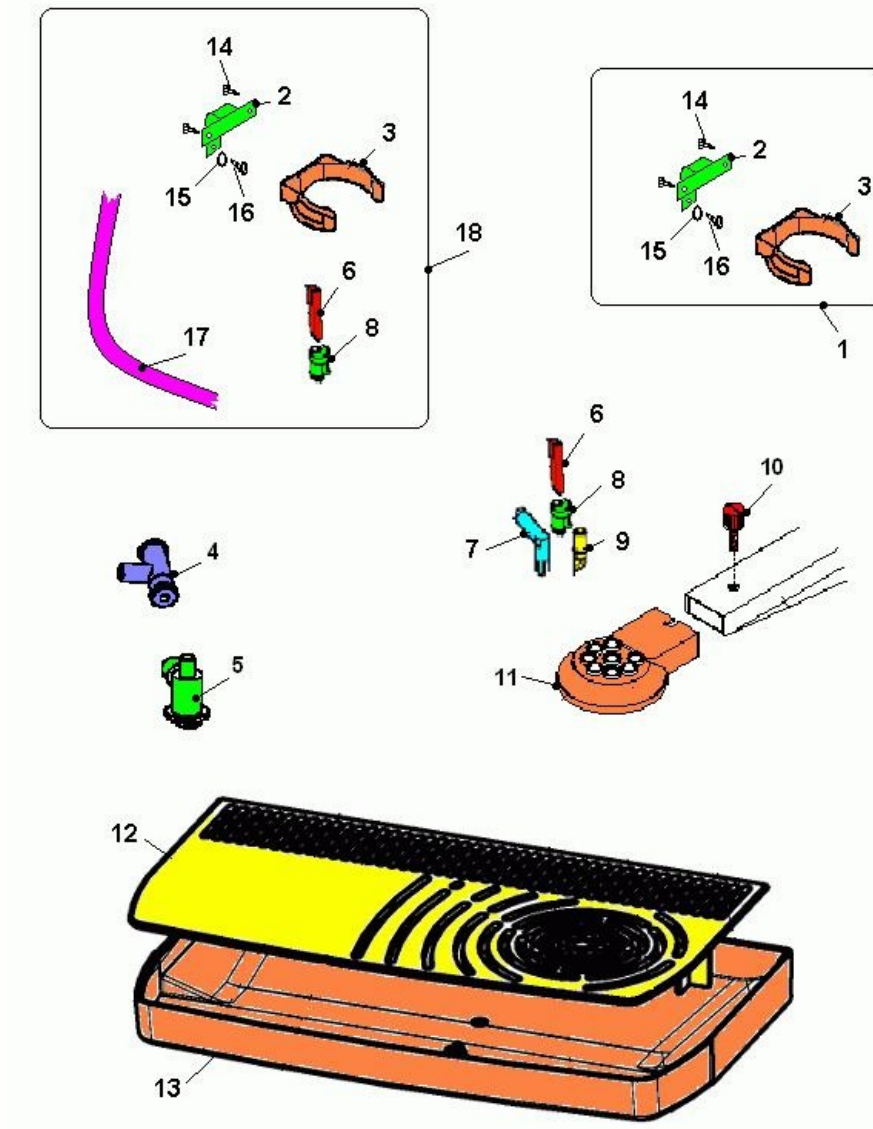
DISCHARGE AND FUNDRAISING (272) - Item detail:

Position	Code	Options	Description
1	09094711		waste coffee pipeown
2	09082121		Ø 75 L=320 tube581
3	05137316		bucketle
4	21056016-01		waste coffee bag spring d 68mm

Group charts

 **SPI07NB - SPRINT A/R I5S BLACK STD**
 **PRODUCT DELIVERY**

NOZZLES AND DISPENSER BREWING (274)



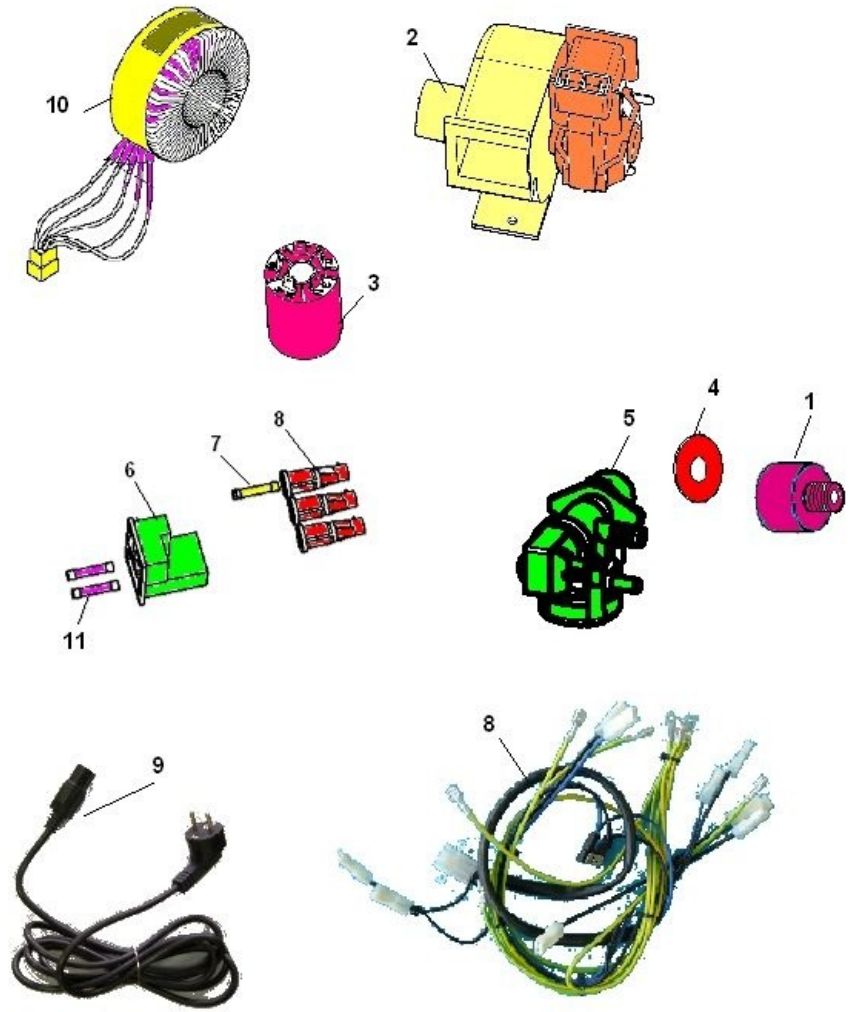
NOZZLES AND DISPENSER BREWING (274) - Item detail:

Position	Code	Options	Description
1	05158320		cup fork kit sprint espresso
2	01656111		Sprint cup fork supporter
3	05000315M09		black cup fork
4	05147615		T connection for pls boilertray grate
5	05145815M37		drain nozzle
6	05099715-01		white L=48 nozzlesy
8	05099615		nozzle bushsy
9	05096025		straight dispensing nozzlee PA66
9	05096035		brown straight dispensing nozzle
10	19043521		fixing knobgroup
11	05089925-02M37		8 pos.nozzles supp.flange PA66
12	05145525		sprint IN grid for tray blackl.tray grate
13,3	05145425		black liquids tray sprint INI.tray
14	32222866		3.9x9.5 self-tapping screw
15	35160326		tooth washer D. 4,2IX
16	32222826		2.9x9.5 self-tapping screw
17	09087823		grey silicon pipe 5x9581
17	09087823-02		brown sez silicon pipe 5x9
18	05158310		cup fork kit sprint instantly grate(graph.)

Group charts

 **SPI07NB - SPRINT A/R I5S BLACK STD**
 **ELECTRIC & ELECTRONICS**

POWER CONVERTER AND COMPONENTS FOR MAINS SUPPLY (279)



POWER CONVERTER AND COMPONENTS FOR MAINS SUPPLY (279) - Item detail:

Position	Code	Options	Description
1	04000121		Straight connection 3/8 Gmassy
2	20020416		Sprint aspiratord shaft
3	43146216		net filter quick connection
4	05111016		Ø 25,5 silicone plain gaskett.frame silver
5	25021116		elecrovalve anti overflow 24VDC(1200cc)
6	43134116		plug+switch+fuse hold.
7	23014926-01		12,5A fuseable
8	22127912-01		Sprint IMQ 220V cable
9	22107216-01		230VNet cable C2000/Sprint/Iris
10	23023316-01		230/24-21V 120VA toroidal transformer
11	23014916		10 Amp. fuseable

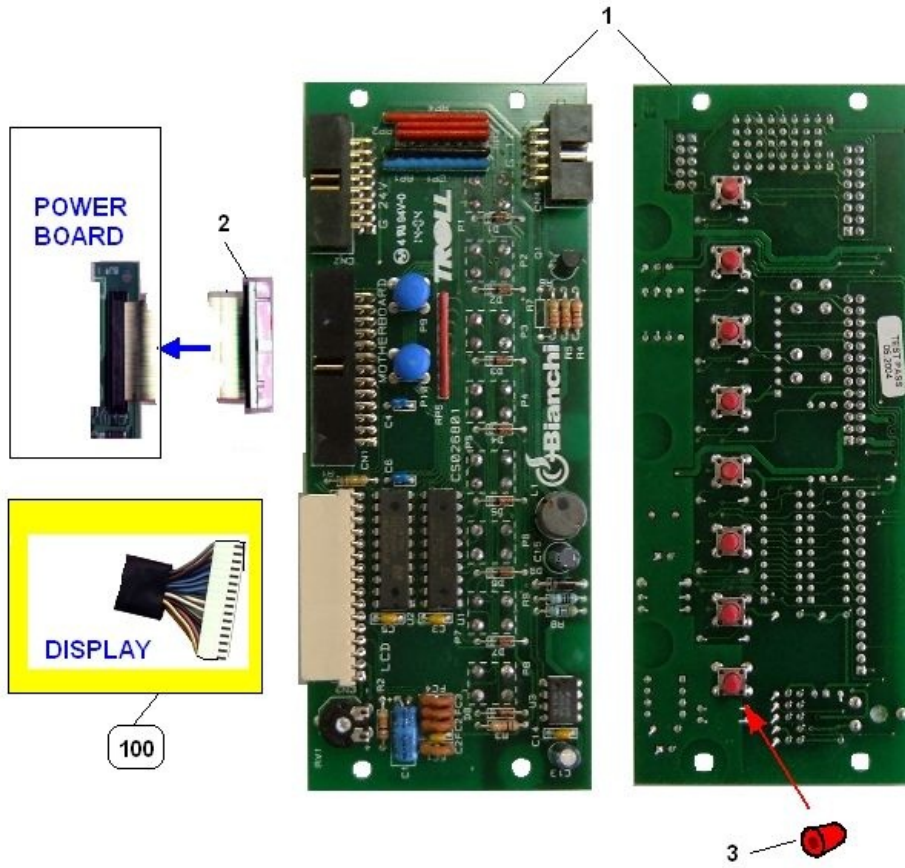
ELECTRONIC BOARD CPU MASTER - POWER AND CONNECTIONS (277)



ELECTRONIC BOARD CPU MASTER - POWER AND CONNECTIONS (277) - Item detail:

Position	Code	Options	Description
1	26029016-03		power/master board /Spr.inst.
2	22129012		main board to keyp.board Flat /sprint
3	26028016-267AB		microprocessor for Troll board267AB
4	22128112-01		Sprint 24V cable
5	22127822		water level sensor cable IRIS
100	328		KEYBOARD BOARD (260)

KEYBOARD BOARD (260)

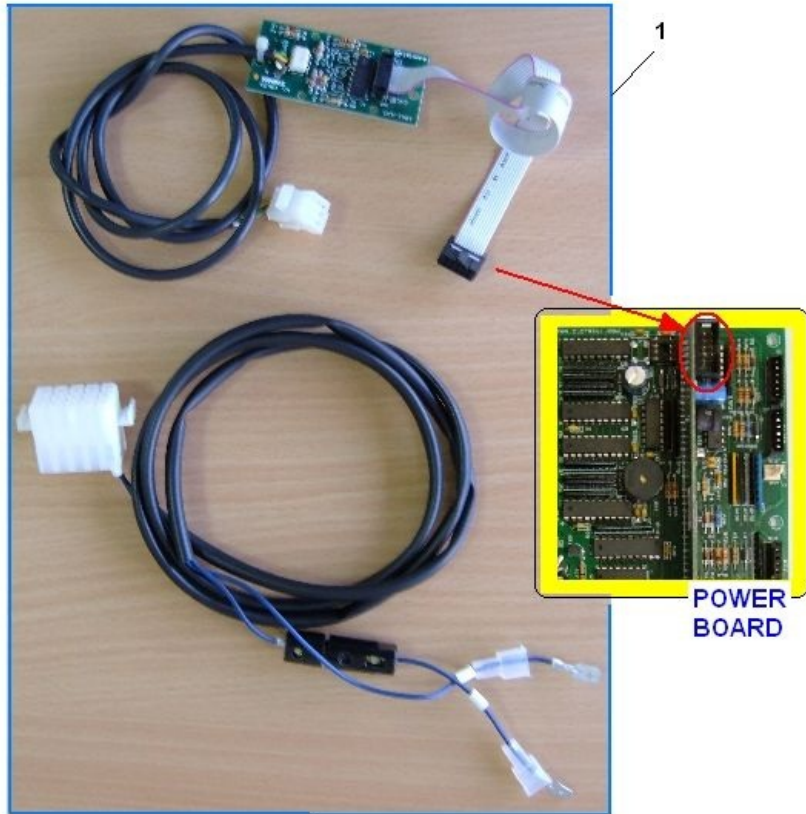


KEYBOARD BOARD (260) - Item detail:

Position	Code	Options	Description
1	26028926		keyboard card for Sprint 12/24V
2	22129012		main board to keyp.board Flat /sprint
3	05155315		cap for keyboard buttonsy grate(graph.)
100	289		KEYBOARD - DISPLAY(271)

ELECTRONIC BOARD - KIT EXECUTIVE(245)

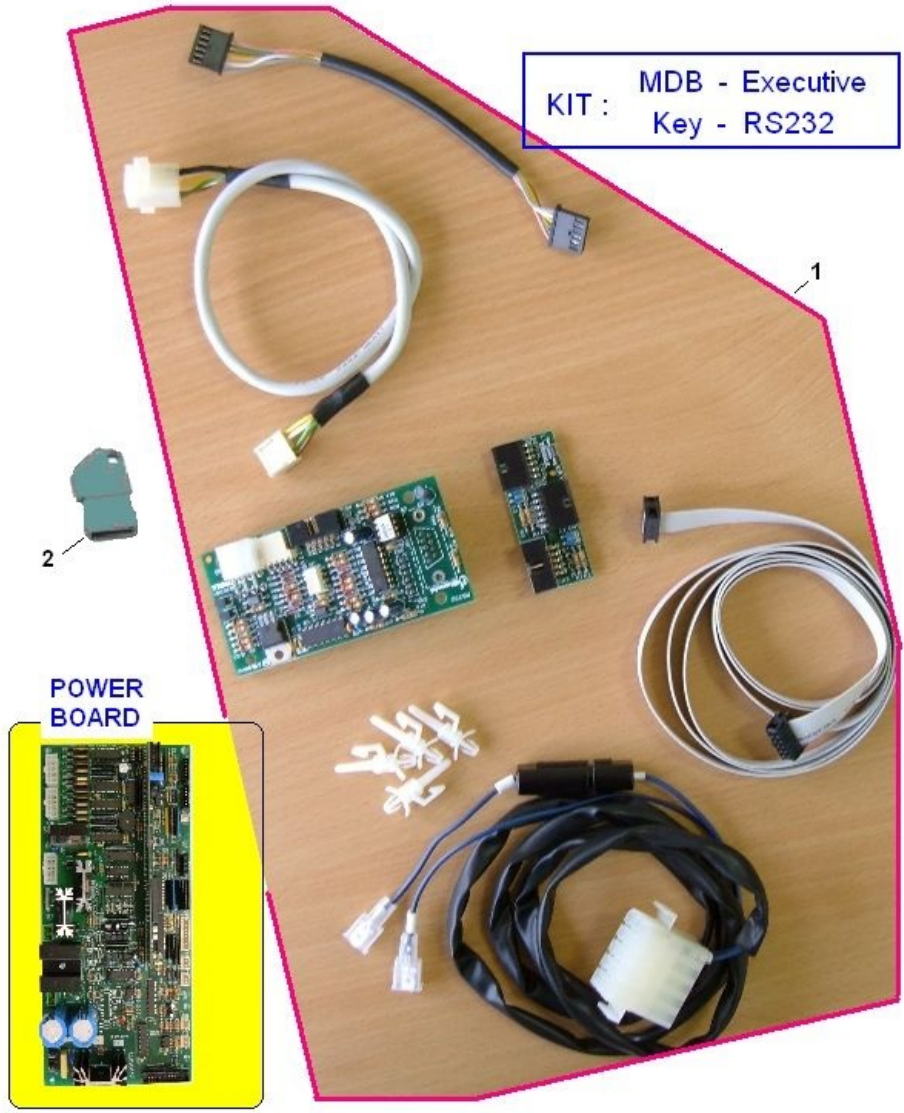
KIT : Executive



ELECTRONIC BOARD - KIT EXECUTIVE(245) - Item detail:

Position Code Options Description

ELECTRONIC BOARD - KIT MDB - EXECUTIVE - KEY(246)



KIT : MDB - Executive
Key - RS232

2

POWER BOARD



1

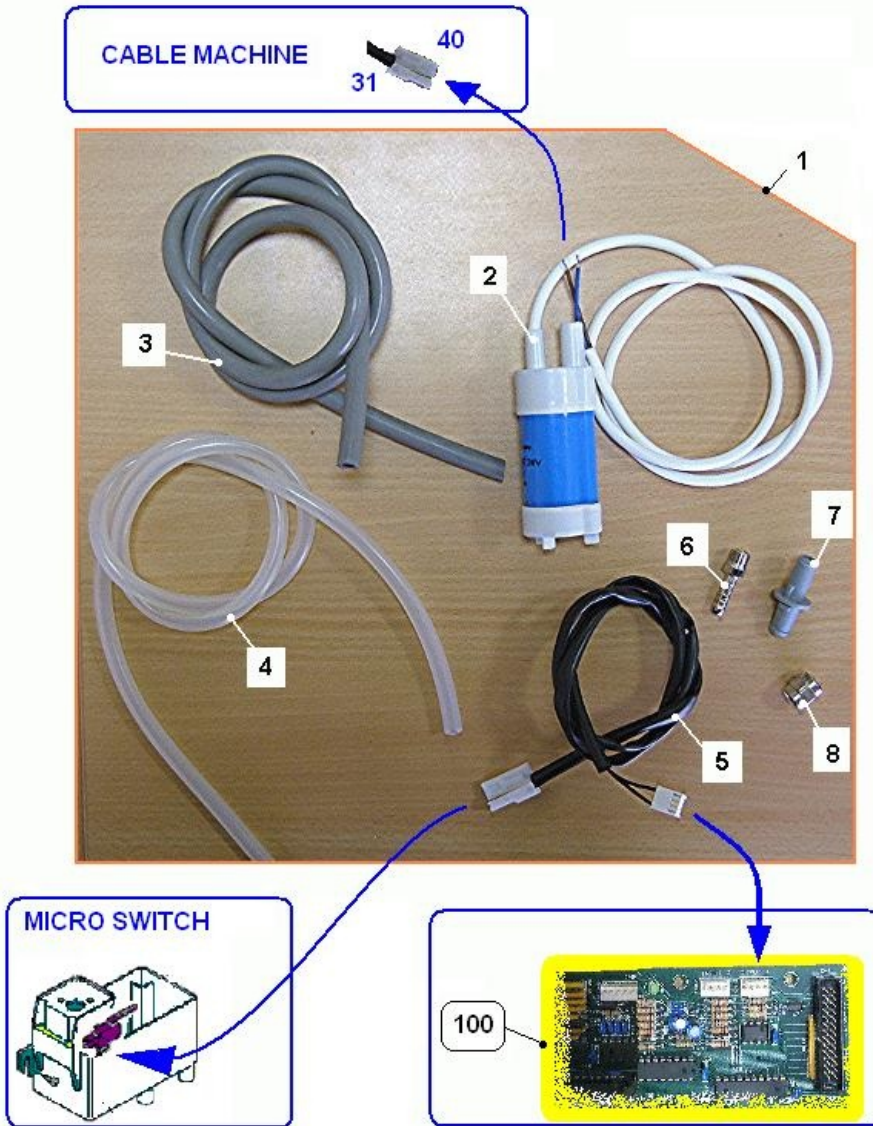
ELECTRONIC BOARD - KIT MDB - EXECUTIVE - KEY(246) - Item detail:

Position Code Options Description

Group charts

 **SPI07NB - SPRINT A/R I5S BLACK STD**
 **HYDRAULIC COMPONENTS**

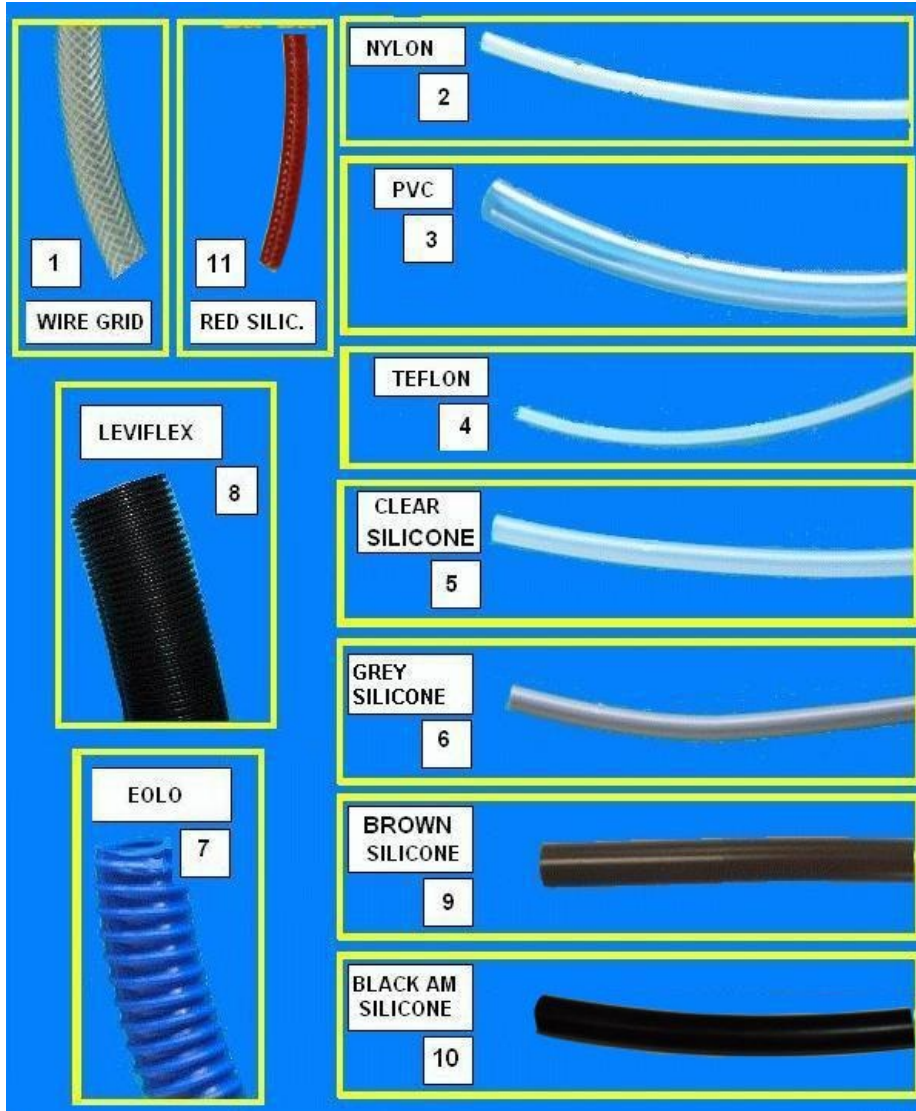
AUTONOMOUS TANK KIT WITH IMMERSION PUMP



AUTONOMOUS TANK KIT WITH IMMERSION PUMP - Item detail:

Position	Code	Options	Description
2	27004016-01		immersion pump 24Vdc
3	09087843-02		7x11 brown silicone pipe
4	09029763-01		5x9 transparent silicone pipe
5	22134212		aut.water tank micro cablerint /Iris
6	04032416		rubber holder 7x1/8assy
7	05146615M37		drain nozzle
8	04039416		female passing muff4 DM7,5
100	321		ELECTRONIC POWER BOARD -CPU TROLL(240)

EOLO AND HYDRO PIPES AVAILABLE (68)



EOLo AND HYDRO PIPES AVAILABLE (68) - Item detail:

Position	Code	Options	Description
1	09094613		10x15 pipeown
2	09009813		8x10 nylon pipe
3	09027623		12x16 L=700 PVC pipe581
3	09027663		14x18 PVC pipe581
3	09027643		14X17 PVC pipe
3	09027653		20x26 PVC pipe581
4	09085413		4x2 teflon pipe581
4	09085423		4x6 teflon pipe581
5	09029763-01		5x9 transparent silicone pipe
5	09036091		3x5 silicon transp.pipe581
5	09037141		4x6 silicone transp.pipe581
5	09029723-01		transparent 8x11 silicone pipe
5	09029753-01		8x12 silicone transp.pipe
6	09087823		grey silicon pipe 5x9581
6	09087833		grey silicon pipe 6x9
7	09092811		Sz 30x35 EOLO pipe581
8	09031113		28x33 Leviflex pipe581
8	09031133		40x46 Leviflex pipe581
9	09087823-02		brown sez silicon pipe 5x9
9	09087873-02		3x6 brown silicone pipe
9	09087843-02		7x11 brown silicone pipe
10	09087823M57		5x9 silicon pipe black am
10	09087843M57		7x11 black AM silicone pipe
11	09105713		Boiler braided tubing